

MBT-410 SYNCHRO SPINNER

Parts List			
ITEM	DESCRIPTION	QTY	PART NUMBER
1	CENTER POLE	1	G887P
2	PLAYPOD W/1.38" HOLE	1	G441
3	545 HUB / SPINDLE ASSY, SYNCHRO	1	EGA201
4	48" FOOTING PIPE	1	G433GS
5	FINIAL 1	2	401585
6	WOBBLY DISC	2	401586
	HARDWARE COMPLETE	1	404660
7	FINIAL SPACER 1	1	401588
	1/2" LOCKWASHER	3	817342
	1/2" x 1 1/4" B.H.C.S.	3	811062
	CAP SCREW, RED.HD 3/8 x 1-1/2 SOC FLT HD SS	3	2441
	3/8" COUPLER NUT	1	804811
	3/8" x 3/4" B.H.C.S.	2	811052
	3/8" FLAT WASHER	2	817410
	DOWEL NUT, 1/4-20	2	1598
	SCREW, 1/4 X 2-1/2" SS - SPANNER HEAD	2	0431
	#8 x 3/4" WOOD SCREW	4	815517
	CAP SCREW, 3/8 x 1-1/4 SOC FLT HD SS	5	2442
	ANCHOR ROD	1	402121
	DECAL PACKAGE, 5-12 YEARS	1	E402

*Unless Otherwise Specified, All Units of Measure are Each
Items listed below Hardware Complete line are included with Hardware Complete Number*

Warning: During Installation, Hardware And Small Parts Are Choking Hazards For Young Children. Store Unused Parts Appropriately Until Assembly Is Completed. Once Assembly Is Completed, Remove Any Unused Parts From The Play Environment And Dispose/Save Them In A Secure Location. Any bolt end protruding more than two full threads beyond the face of the nut causes risk of clothing entanglement.

Promptly cut-off flush, file smooth, and treat to prevent corrosion.

Note: Peen Tee-Nuts and Flatwashers to match radius of pipe after assembly is complete.

Note: Loctite (supplied by others) should be used on any non-patch hardware.

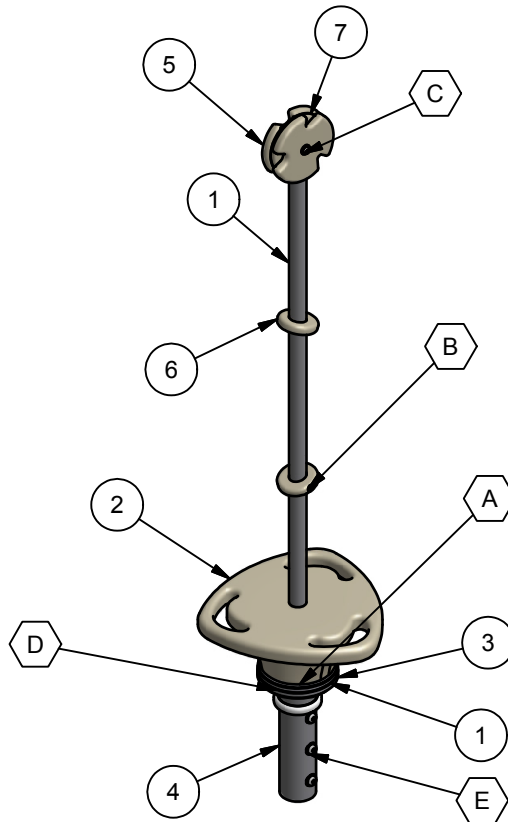
INSTALLATION INSTRUCTIONS:

1. Dig footing holes as shown in Elevation and Plan Views.
2. Attach Playpod to Center Pole using 3/8" x 1 1/2" Cap Screws. See Detail A.
3. Attach Wobbly Discs to pole using 1/4" x 2 1/2" Spanner Head Screw and Dowel Nut. See Detail B.
4. Attach Finials and Finial Spacer to top of Center Pole Assembly using 3/8" x 3/4" B.H.C.S., 3/8" Flatwashers, #8 x 3/4" Wood Screws, and 3/8" Coupler Nut. See Detail C
5. Attach Hub/Spindle Assembly to Center Pole Assembly using 3/8" x 1 1/4" B.H.C.S. See Detail D.
6. Insert Anchor Rod into Footing Pipe. Place footing Pipe into footing hole. Confirm that the Footing Pipe is plumb before filling hole with concrete. Allow Concrete to cure at least 48 hours before use. Temporary bracing may be required until concrete cures.
7. Attach Synchro Spinner Assembly to Footing Pipe using 1/2" x 1" B.H.C.S. AND 1/2" Lockwasher. See Detail E.
8. Attach Warning Label and Age Appropriate Label on the outside of Footing Pipe as high as possible.
Note: Areas must be clean and dry before attaching Labels.

MBT-410 SYNCHRO SPINNER

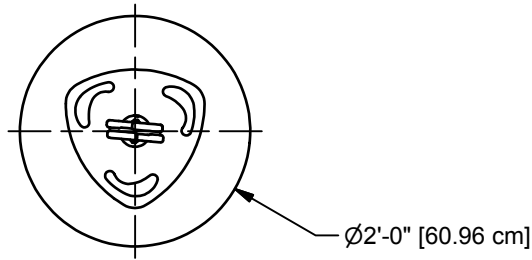
MAINTENANCE PROCEDURE:

Periodically check hardware for tightness, and tighten as necessary. Always check all parts for breakage or wear, and immediately put equipment out of service until any faulty parts found are repaired or replaced. Also Check all metal parts for rust, paint loss and touch-up if necessary with paint. Check for welded areas and verify integrity. Check periodically resilient surfacing for appropriate depth and remove extraneous materials that could cause injury, infection, or disease. Maintain detailed installation, inspection, maintenance, and repair records for each public-use playground equipment.



FINISHED ASSEMBLY

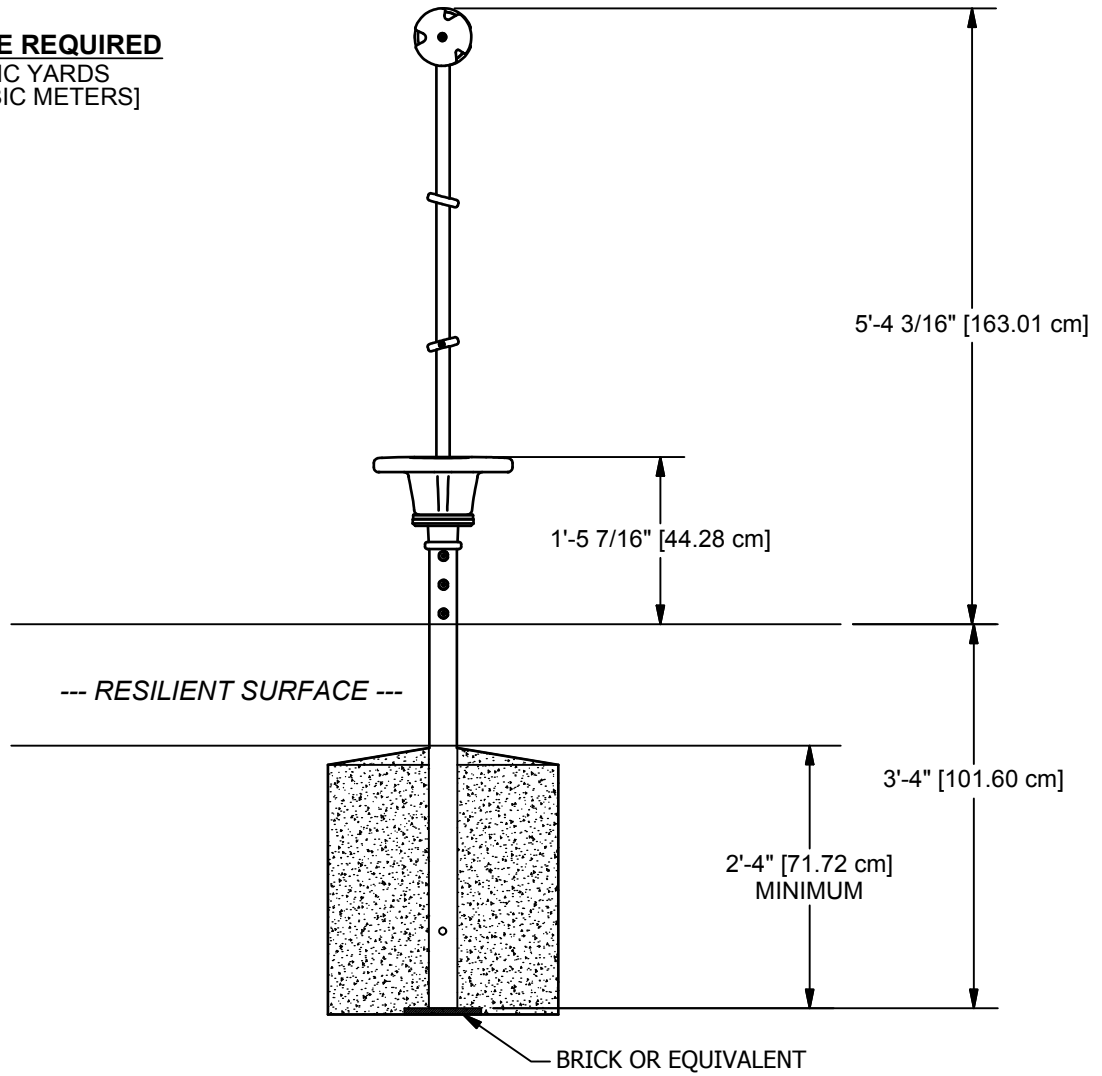
MBT-410 SYNCHRO SPINNER



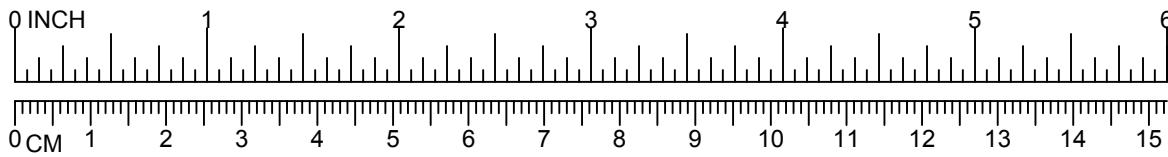
PLAN VIEW

CONCRETE REQUIRED

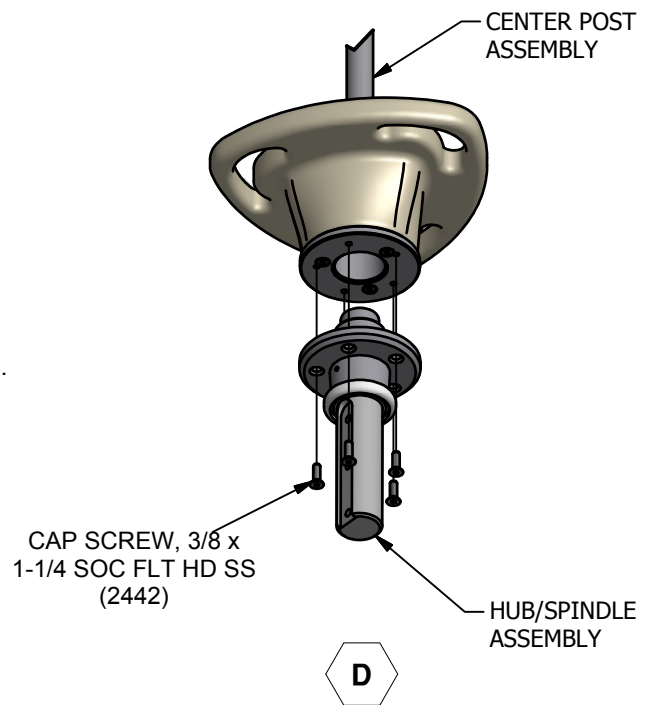
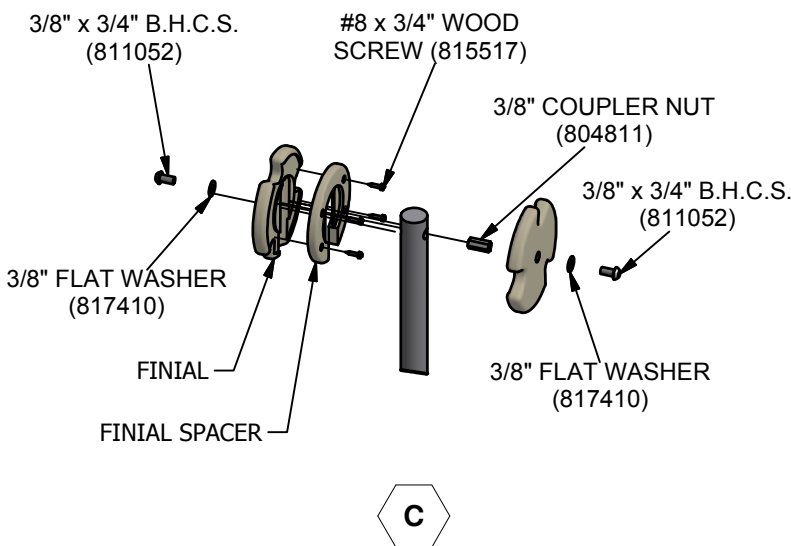
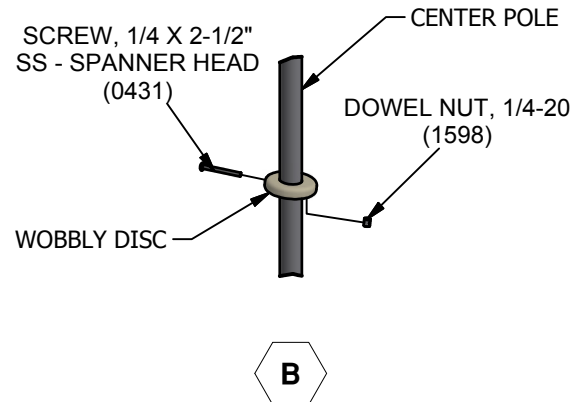
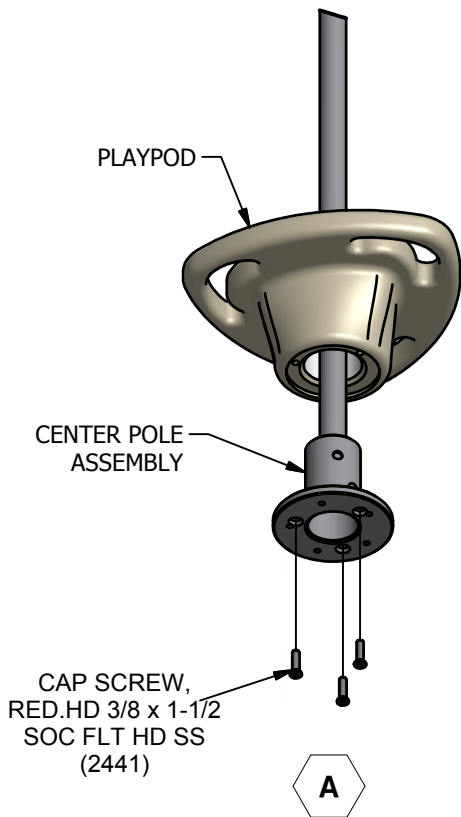
.27 CUBIC YARDS
.21 [CUBIC METERS]

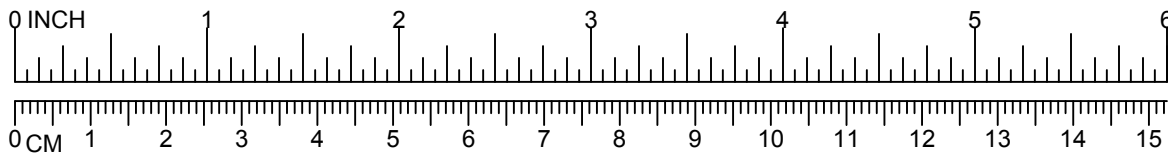


ELEVATION VIEW



MBT-410 SYNCHRO SPINNER





MBT-410 SYNCHRO SPINNER

