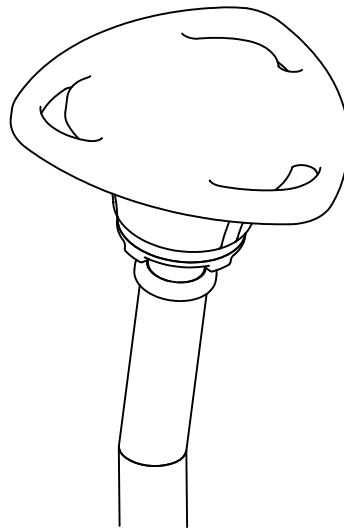





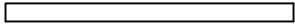


Synchro Pod

MBT-430
Installation Instructions

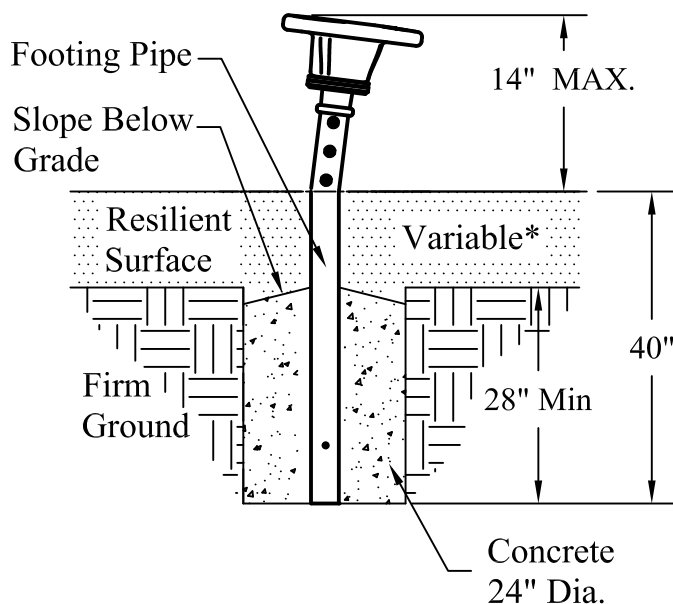
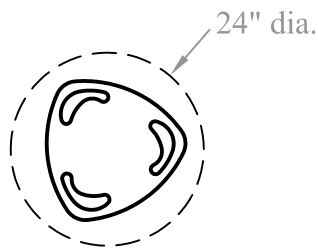
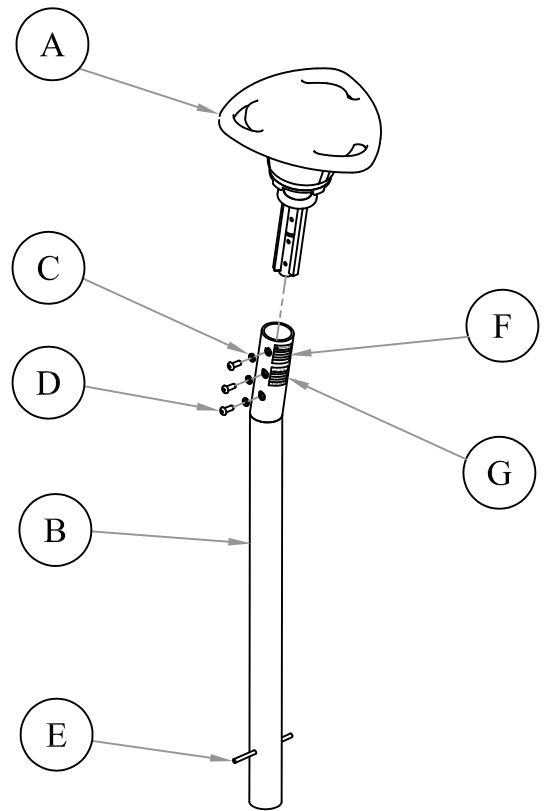


DET.	QTY.	PART#	DESCRIPTION	ICON (NOT TO SCALE)
A	1	402209	Synchro Pod Assy	
B	1	402077	10 Deg Footing Assy	
	1	D046	Connector/ Synchro POD	
C	3	817342	Washer 1/2" Lock SS	 
D	3	811062	Cap Screw 1/2 x 1-1/4" Btn Hd P/lock SS	 
E	1	402121	Anchor Rod 3/8" x 6" Round Bar Plain	 
	1	E402	Decal Package 5-12- Years - Metal	
F	1	404293	Warning Label	
G	1	0223	Age Appropriate Label 5-12 Years	

1. Refer to your structure design layout for location of the **Synchro Pod**.
2. Layout footing and dig hole as shown.
3. Insert **Anchor Rod (E)** into **Footing Pipe (B)**
4. Place **Footing Pipe (B)** into footing hole. Use flat object under pipe to maintain proper elevation.
5. Confirm that the **Footing pipe (B)** is plumb and fill hole with concrete.
6. Attach **Synchro Pod (A)** to **Footing Pipe (B)** using hardware (C)(D) as shown.
7. Attach **Warning Label (F)** and **Age Appropriate Label (G)** on the outside of Footing Pipe and as high as possible.
Note: Area must be clean and dry before attaching Labels.



Make sure the Footing Pipe is plumb and level before filling footing holes with concrete.



NOTE:
Do not allow unit to be used until concrete has fully cured, according to concrete manufacture's specification.