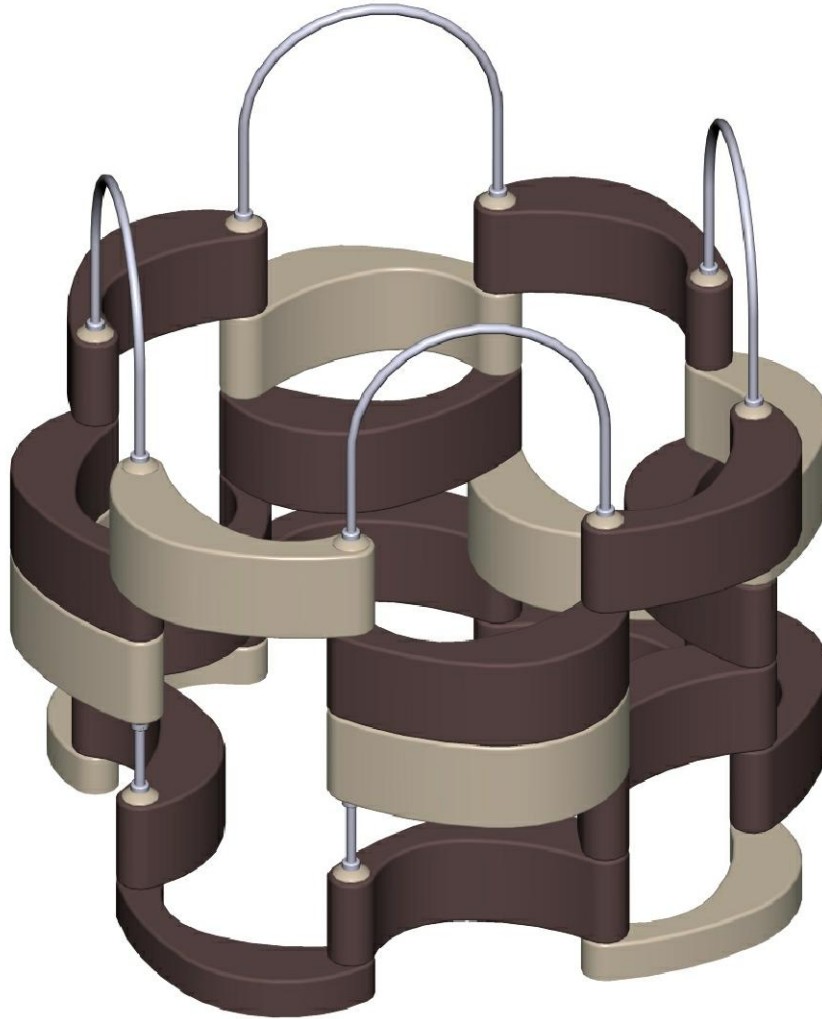



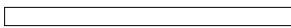


# PlayShell Fort 8-Sided

BT-268  
Installation Instructions



DET.	QTY.	PART#	DESCRIPTION	ICON (NOT TO SCALE)
A	15	402338	Playshell 12" (Predominate Color)	
B	8	401548	Playshell 12" (Complementary Color)	
C	8	R374	Pipe Base 66" PlayShell	
D	4	R360	Pipe, Arched	
E	20	402251	PlayShell Collar, Plastic	
F	20	G425	PlayShell Stop Collar	
G	8	402121	Anchor Rod 3/8" x 6" Round Bar Plain	
		H400D	Label Package, 5-12 Years - Wood	

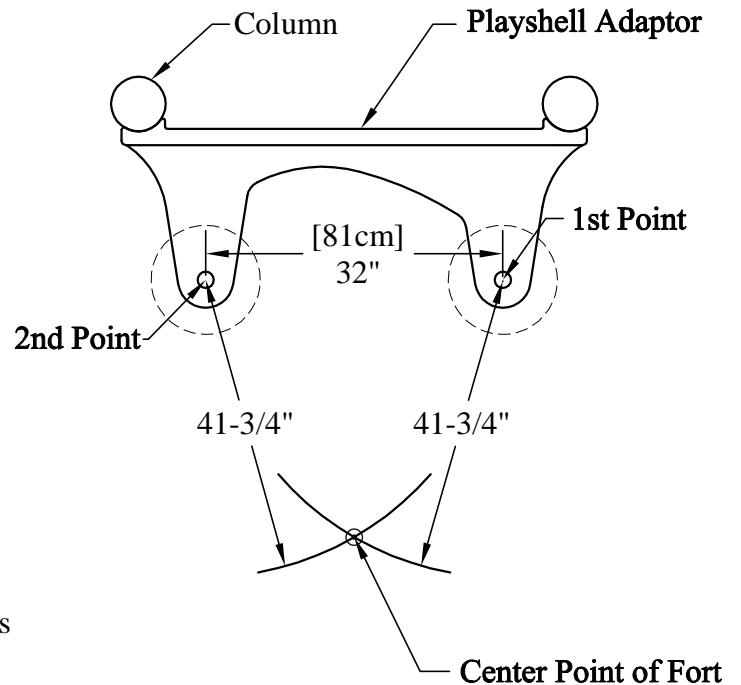


*Important! Read this installation instruction thoroughly and refer back to it frequently during installation process.*

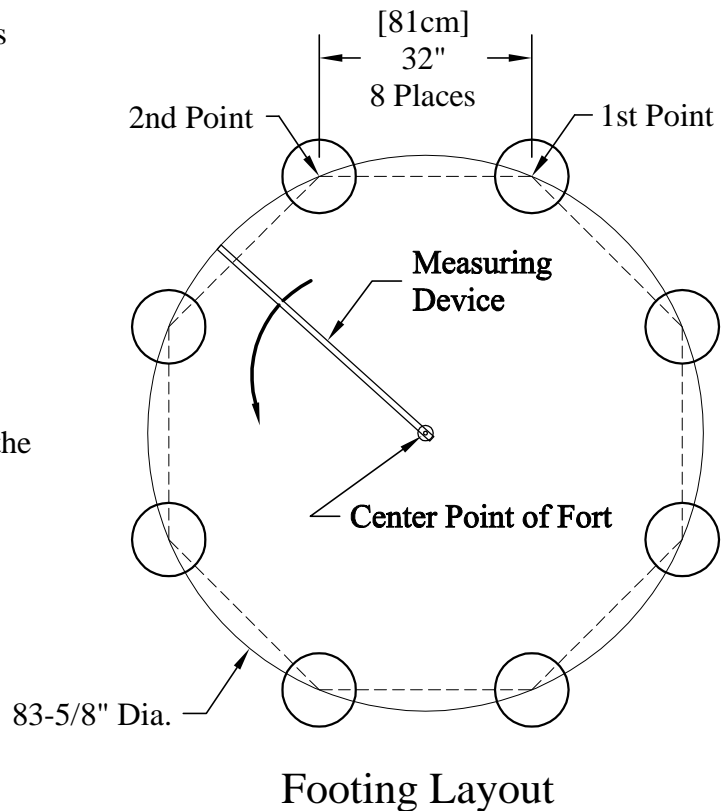
1. Refer to your structure design for the location and configuration of your Playshell Fort.
2. If your Playshell Fort is a stand-alone structure go to Step 4.
3. When attaching a fort to an existing structure, locate the center point of the fort by first suspending a plumb bob from the Playshell Climb Adaptor pipe holes, then project two arcs from those locations. The fort center point is where the two arcs intersect. See diagram at right.

*Note: If your Playshell Fort has a Playshell Climb Adaptor and will be attaching to a new structure, we suggest building the fort first, then attach columns and platforms to the fort. (See Installation Instruction for Playshell Climb Adaptor i11-035.)*

4. **Determine the location** of the footing holes by following these steps:
  - A. **Locate the center point** of the Fort.
  - B. **Draw a 83-5/8" diameter circle** in the soil.
  - C. **Place a mark on the circle** for the first footing hole.
  - D. **Place a mark** on the circle at 32" from the previous mark.
  - E. **Continue this process** (step D) until all footing holes are located. As shown in your structure design.



### Locating Fort Center Point on an Existing Structure



## 5. Dig footing holes.

### Footing Depth Formula

Use this simple formula to find the footing depths for your BigToys® Playshell Fort:

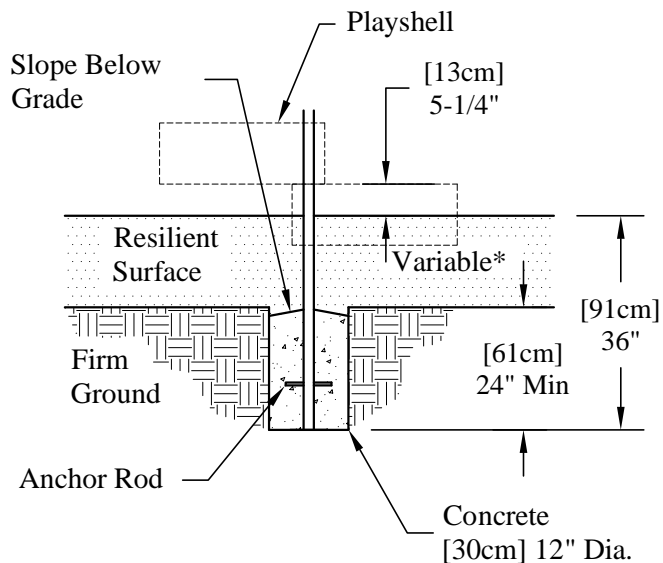
Total Depth minus Resilient Surface Thickness equals Footing Depth.  
 $TD - RST = FD$

Example: to find the footing depth for a Playshell Footing Pipe with 12 inches of resilient surface, the formula would look like this:

$$36" - 12" = 24"$$

Your footing depth is 24"

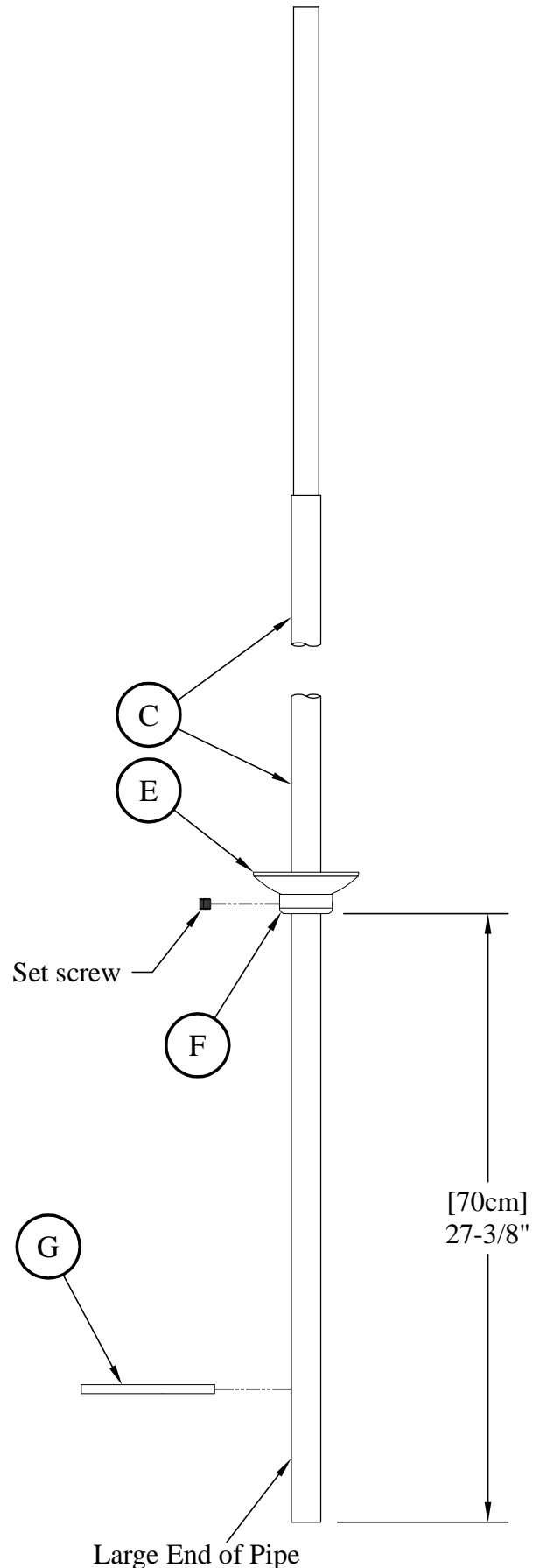
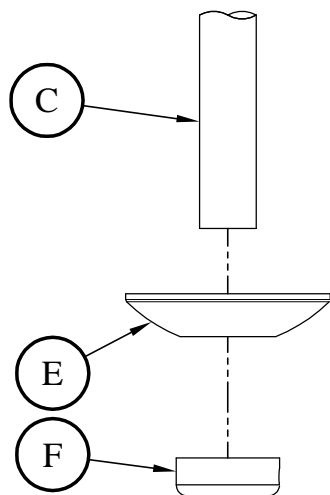
*\* Depth of resilient surface will vary depending on the type of surfacing used. (See enclosed USCPSC report.)*



Base Pipe Footing

## Assemble Base Pipes

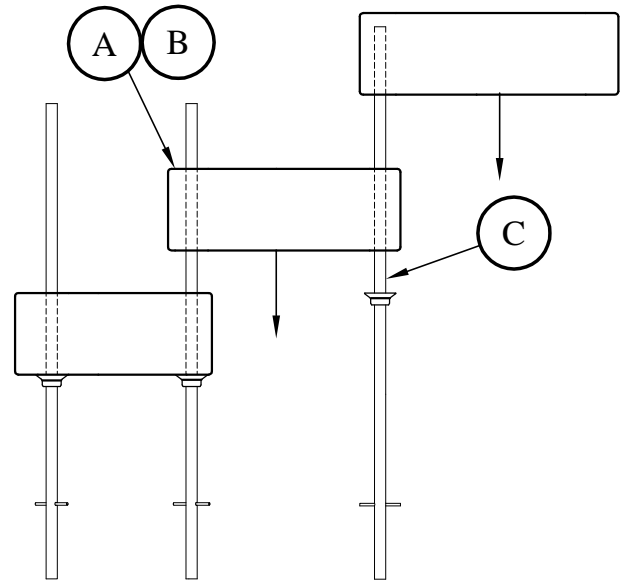
6. **Slide Collars (E)** onto the Base Pipes (C) from the large end of pipe.
7. **Slide Stop Collars (F)** onto the Base Pipes (C) from the large end of pipe.
8. **Adjust Stop Collar (F)** so the bottom is 27-3/8" from the large end of Base Pipes (C) as shown.
9. **Tighten set screws** in the Stop Collars (F).
10. **Insert a 6" Anchor Rod (G)** in the lower hole of each Base Pipe (C) and place Base Pipes in the appropriate footing holes.



11. **Assemble Playshells (A)(B)** as shown in the elevation buildup sheet(s) in the back of this document.

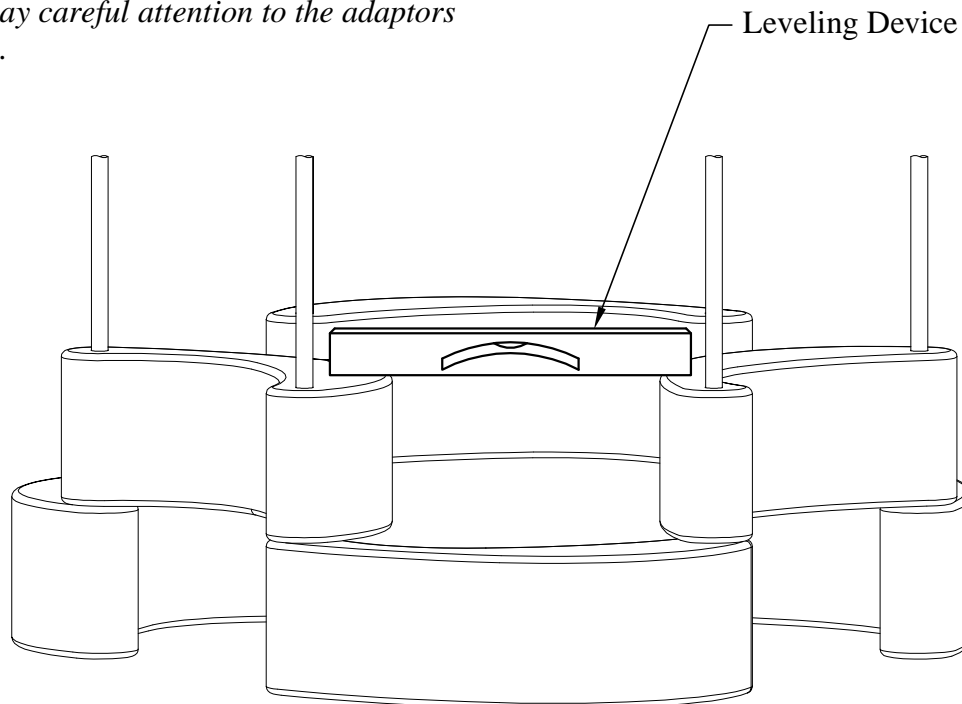
*Note: The color designation of each Playshell is denoted by a "P" for Predominate (majority) color, and "C" for Complimentary (minority) color. See elevation buildup sheet.*

*Note: If your Playshell Fort has a Playshell Climb Adaptor refer to your structure design configuration to verify if Option 2 has been used in place of a Playshell. The number shown on top of the Playshell Climb Adaptor indicates the adjacent platform height.*



12. **Orient each Playshell (A)(B)** and progressively slide Playshells over Base Pipes (C) building upward from the lowest Playshell.

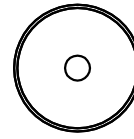
*Note: Build each elevation as shown on buildup sheet(s) in the back of this document. When Playshell Climb Adaptor(s) are used, pay careful attention to the adaptors orientation.*



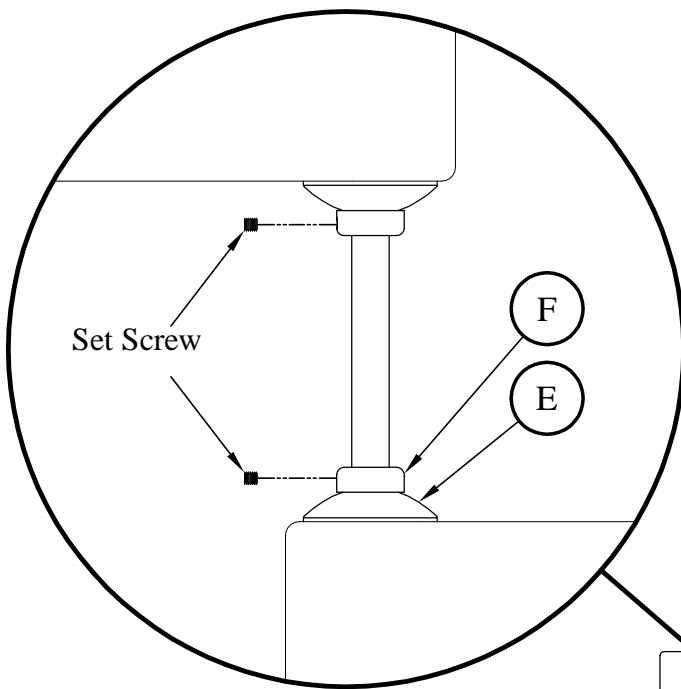
*Note: Check plumb and level after second elevation is finished. Place leveling device so that it spans from one Playshell across to another as shown.*

*Configurations shown are for illustration only. Check your structure design for proper configuration.*

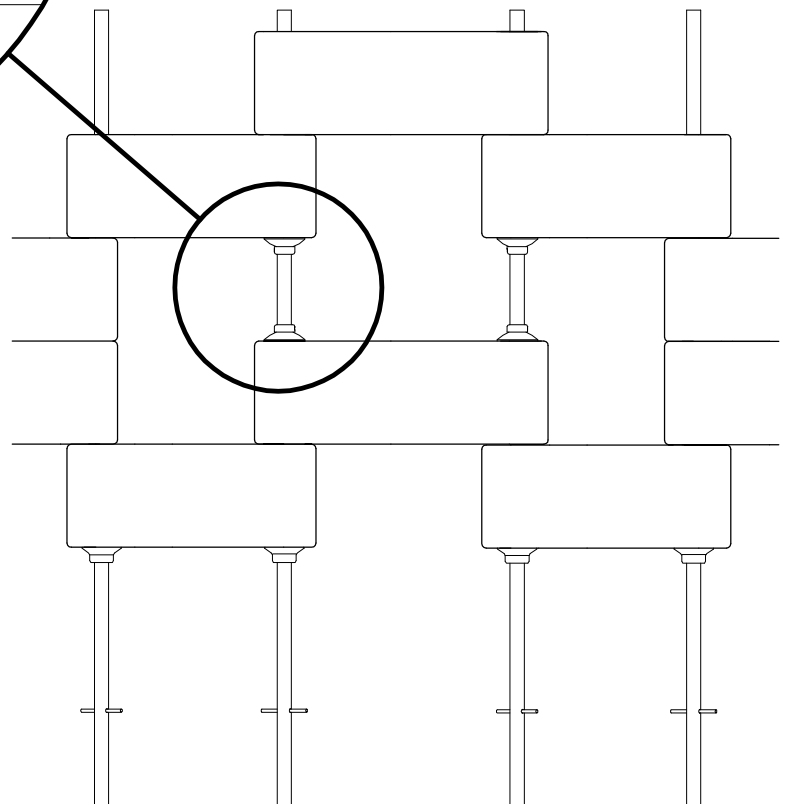
*Note: In locations where there is a missing Playshell, as shown on the elevation build up sheet(s), a collar symbol is shown in its place. Remember to insert upper and lower Collars (E) and upper and lower Stop Collars (F) as shown on Collar Detail.*



**Collar Symbol**



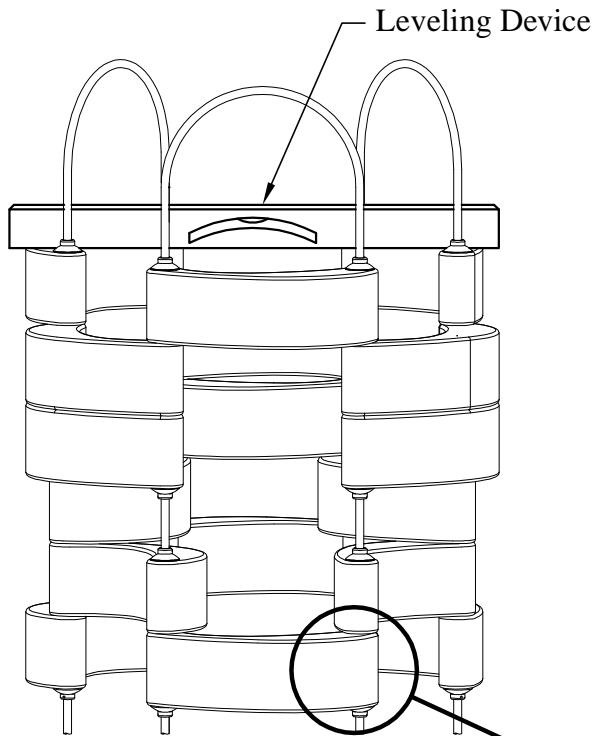
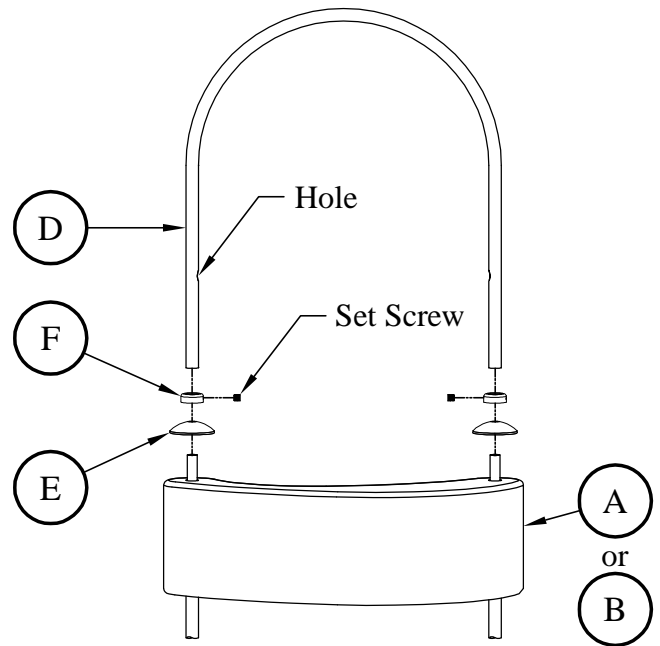
**Collar Detail**



- 13. Install Arch-Pipes (D) Collars (E) and Stop Collars (F) to Playshell Base Pipe (C). Tighten Set screws.**

*Note: Make sure Set Screws in Stop Collars (F) are properly aligned with holes in Arched Pipes (D).*

*Note: Refer to Picture on page 1 for Arch-Pipe Orientation.*



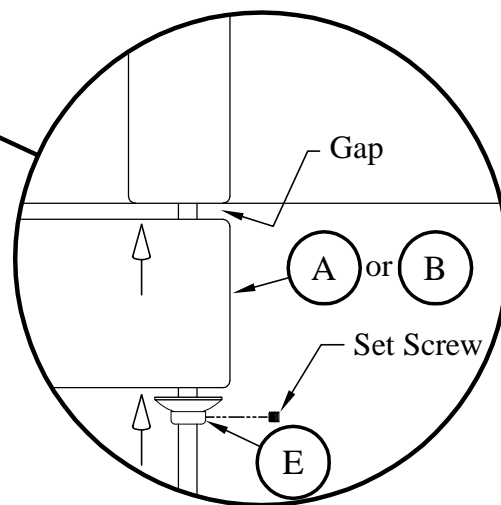
- 14. Plumb and level entire Fort.**

*Note: When checking level, place leveling device so that it spans from one Playshell across to another as shown.*

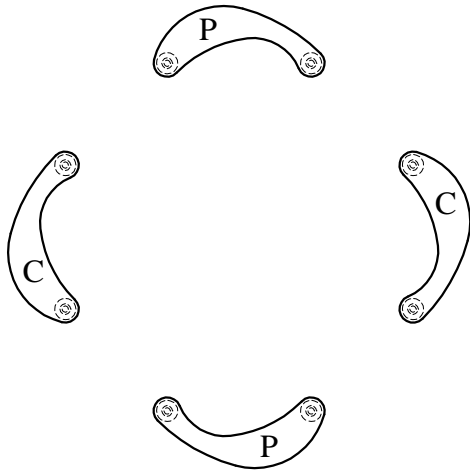
- 15. Pour concrete into footing holes.**  
(See "Concrete Requirements")

- 16. Allow concrete to set up 24 hours** before proceeding to the next step.

- 17. Readjust lower Stop Collars (F) to eliminate any gaps between Playshells.**



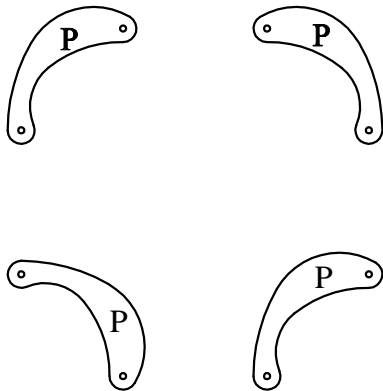
# Elevation Buildup Sheet for BT-268



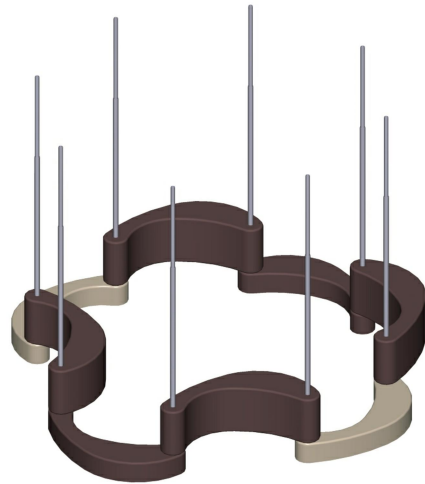
Elevation 1



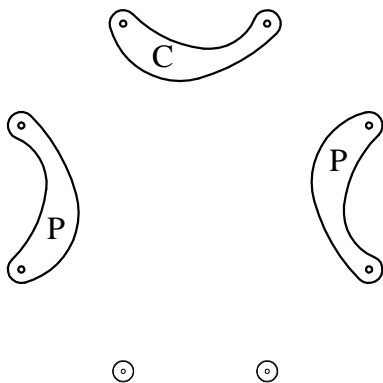
Elevation 1



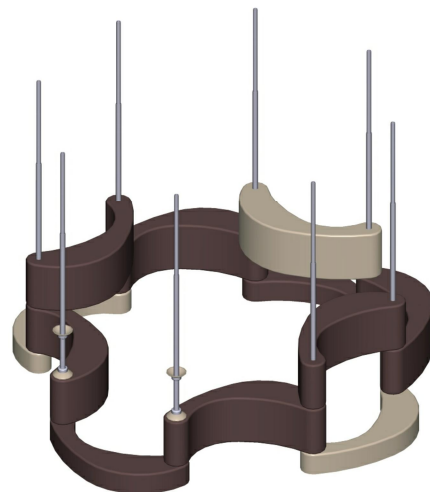
Elevation 2



Elevation 2



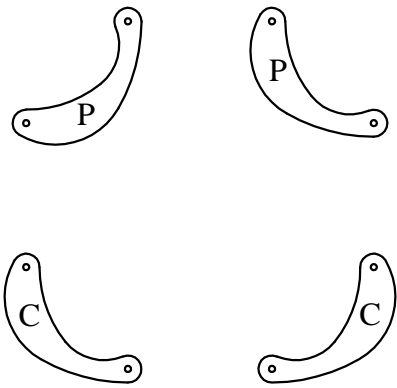
Elevation 3



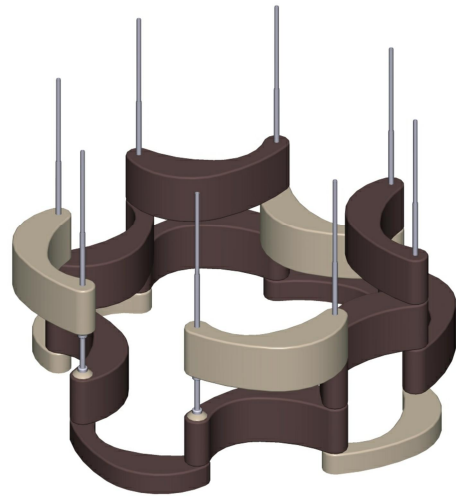
Elevation 3



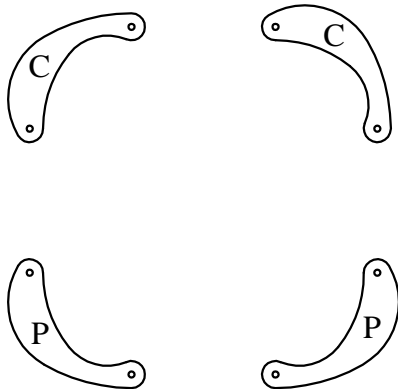
# Elevation Buildup Sheet for BT-268



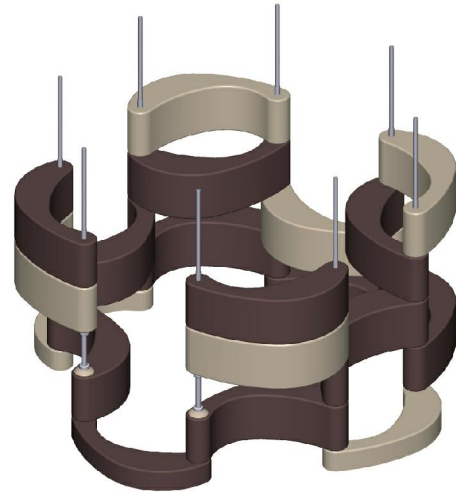
Elevation 4



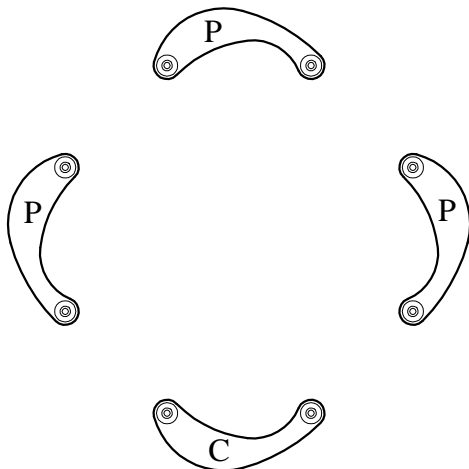
Elevation 4



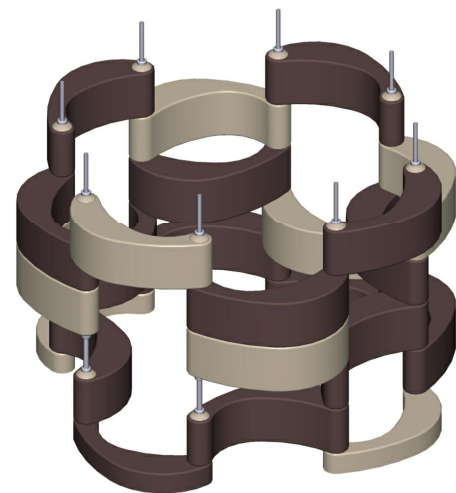
Elevation 5



Elevation 5



Elevation 6



Elevation 6