

MEC241 DUAL GAS PUMP STATION

Parts List		
DESCRIPTION	QTY	PART NUMBER
L-BRACKET	6	200205
PUMP RIGHT SIDE	2	405103
PUMP LEFT SIDE	2	405104
NOZZLE PANEL	2	405105
PUMP FRONT TOP	2	405107
PUMP FRONT BOTTOM	2	405108
PUMP BACK BRACE	4	405110
PUMP LONG BRACE	4	405111
PUMP MEDIUM BRACE	4	405112
PUMP SHORT BRACE	4	405113
PUMP TUBE	2	405114
PUMP BACK	2	405116
PANEL PUMP TOP	2	405119
STAND UPRIGHT	2	405363
AWNING	1	405365
GAS STATION SIGN	1	405375
BOTTOM PANEL	1	405376
GAS STATION TABLE	1	405377
---HARDWARE COMPLETE---	1	405378
10MM DO-NUT BASE	22	G030*
10MM DO-NUT CAP	22	G032*
#4 x 1/2" PAN HEAD SCREW	2	809400*
#10 x 1" WOOD SCREW	64	815515*
5/16" x 1" P.B.H.C.S. w/PATCH	2	812042*
5/16" FLAT WASHER (5/8" O.D.)	4	817406*
5/16" HEX NUT	2	804052*
3/8" x 3/4" CARRIAGE BOLT	8	800252*
3/8" x 1 1/4" P.B.H.C.S. w/PATCH	2	812051*
3/8" x 1 3/4" P.B.H.C.S. w/PATCH	6	812054*
3/8" x 4 1/2" HEX HEAD BOLT	2	801017*
3/8" x 5" HEX HEAD BOLT	8	801019*
3/8" INTERNAL TOOTH LOCKWASHER	22	817200*
3/8" FLAT WASHER	2	817410*
3/8" FLAT WASHER (1 1/4" O.D.)	12	817424*
3/8" HEAVY HEX NUT	6	804200*
3/8" LOCK NUT	12	804353*
3/8" BARREL NUT	8	804804*



MEC241 DUAL GAS PUMP STATION

Unless Otherwise Specified, All Units of Measure are Each

Items listed below Hardware Complete line are included with Hardware Complete Number

Warning: During Installation, Hardware And Small Parts Are Choking Hazards For Young Children. Store Unused Parts Appropriately Until Assembly Is Completed. Once Assembly Is Completed, Remove Any Unused Parts From The Play Environment And Dispose/Save Them In A Secure Location. Any bolt end protruding more than two full threads beyond the face of the nut causes risk of clothing entanglement. Promptly cut-off flush, file smooth, and treat to prevent corrosion.

Note: Peen Tee-Nuts and Flatwashers to match radius of pipe after assembly is complete.

Note: Loctite (supplied by others) should be used on any non-patch hardware.

SPECIFICATIONS:

L- Bracket:

Shall be fabricated from 3/16" x 2" hot rolled pickled and oiled flat steel. L-Bracket will have baked on polyester powder-coated finish after fabrication.

Pump Right Side, Pump Left Side, Nozzle Panel, Pump Front Top, Pump Front Bottom, Pump Back, Panel Pump Top, and Awning:

Panels shall be precision cut from a single solid sheet of .50" thick UV-stabilized extruded high-density polyethylene with colors molded in. The material will have a density of 60 lbs/ft³ and a tensile strength of 4400 PSI (30 Mpa) as determined per procedure C of ASTM D1928. All edges shall have radiuses and all corners rounded for safe play.

Pump Back Brace, Pump Long Brace, Pump Medium Brace, and Pump Short Brace:

Shall be fabricated from 2" x 4" Nominal HDPE UV-inhibited Plastic Lumber. Density/L.F.:0.061.

Pump Tube:

Shall be fabricated from .625" O.D. Black PVC Tubing.

Stand Upright:

Shall be fabricated from 4" x 4" Nominal HDPE UV-inhibited Plastic Lumber. Density/L.F.:0.061.

Gas Station Sign, Bottom Panel, and Gas Station Table:

Panels shall be precision cut from a single solid sheet of .750" thick UV-stabilized extruded high-density polyethylene with colors molded in. The material will have a density of 60 lbs/ft³ and a tensile strength of 4400 PSI (30 Mpa) as determined per procedure C of ASTM D1928. All edges shall have radiuses and all corners rounded for safe play.

Powder Coat Finish:

Shall be an electrostatically applied custom formula of TGIC polyester powder. All components will be free of sharp edges and excess weld spatter and shall be cleaned in a six stage bath system with an iron phosphate wash, as a rust inhibitor, and a sealer to prevent flash rusting before coating. The coating shall have a super tough finish with maximum exterior durability and will have superior adhesion characteristics. Typical characteristics are: 3.0 - 5.0 mil thickness and oven cured between 375 to 425 degrees Fahrenheit. Pencil Hardness H (ASTM D-3363), Impact (ASTM D-2794-69), Wedge Bend (ASTM D-522-68)

Hardware:

All nuts, bolts, screws, inserts, and lockwashers used in the assembly of all play equipment, shall be stainless steel, yellow dichromate plated steel, blue-coated plated steel, mechanically galvanized or powder coated/yellow dichromate plated steel. All primary fasteners shall be 300 series stainless steel. Fasteners with yellow dichromate treatment have an electro deposited, 99.9% pure zinc substrate applied from a specially formulated solution sealed with a yellow dichromate top coated designed to work in conjunction with the zinc plating. Yellow dichromate has a 320% longer life to white corrosion and 275% longer to red corrosion than does hot-dip galvanizing. NOTE: All weights are based on average comparisons of each part.

MEC241 DUAL GAS PUMP STATION

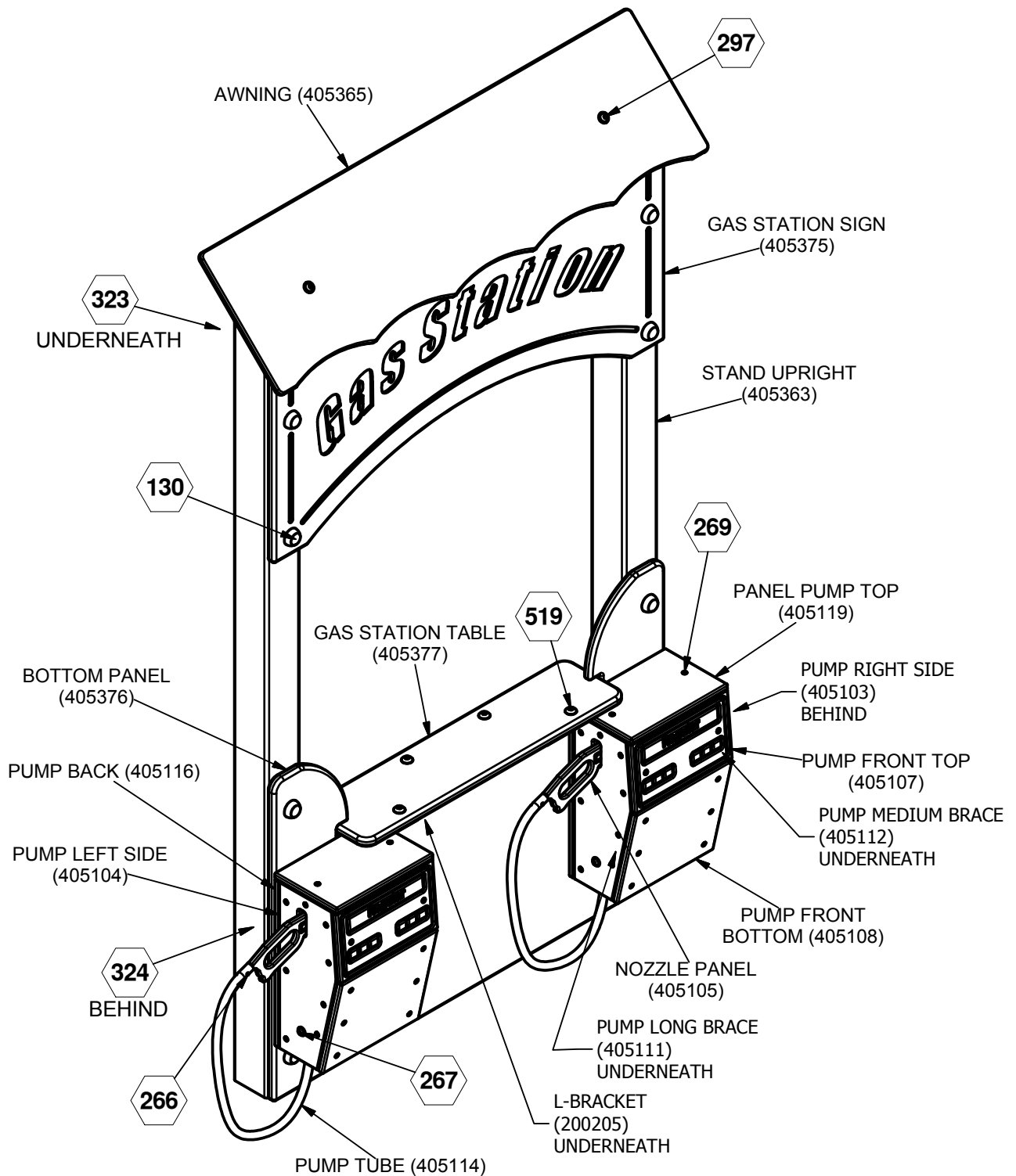
INSTALLATION INSTRUCTIONS:

1. Dig holes according to the Ground Plan. See Ground Plan for dimensions and notes regarding surfacing, etc. **NOTE:** *Due to extremes in weather and soil conditions, hole sizes may have to be increased to meet local conditions.*
2. Attach Braces to Side Panels using #10 x 1 1/2" Wood Screws. See Detail 269.
3. Attach Post Pump Back to Pump Back Braces using #10 x 1 1/2" Wood Screws. See Detail 269.
4. Attach Pump Front Top and Pump Front Bottom to Pump Long Braces and Pump Medium Braces using #10 x 1 1/2" Wood Screws. See Detail 269.
5. Attach Pump Top to Pump Short Brace using #10 x 1 1/2" Wood Screws. See Detail 269.
6. Using 1/4" drill bit, drill hole in one end of the Pump Tube. Drill approximately 3/4" from end of Pump Tube.
7. Attach Pump Tube to the inside of the Pump Left Side using 5/16" x 1 P.B.H.C.S. w/Patch, 5/16" Flat Washer, and 5/16" Hex Nut. See Detail 267.
8. Attach Pump Tube to Nozzle Panel using #4 x 1/2" Pan Head Screw. See Detail 266.
9. Insert Nozzle Panel into Pump Left Side Panel.
10. Attach Pump Top to Pump Stand using #10 x 2" Wood Screw. See Detail 268.
11. Locate Stand Uprights and attach Bottom Panel using 10mm Do-Nut Base, 3/8" Internal Tooth Lock Washer, 3/8" x 4 3/4" Hex Head Bolt, 3/8" Lock Nut, and 10mm Do-Nut Cap. See Detail 130.
12. Attach Gas Station Sign to Stand Uprights using 10mm Do-Nut Caps, 3/8" x 5" Hex Head Bolt, 3/8" Internal Lock Washers, 10mm Do-Nut Bases, and 3/8" Lock Nut. See Detail 130.
13. Place the Gas Station Table into the top slots of the Bottom Panel. Attach using 3/8" x 3/4" Carriage Bolt, L-Bracket, and 3/8" Barrel Nut. See Detail 519.
14. Attach assembled gas pumps to Bottom Panel using 3/8" x 1 3/4" P.B.H.C.S. w/Patch, 3/8" Flat Washers (1 1/4" O.D.), and 3/8" Heavy Hex Nut. See Detail 324.
15. Attach L-Bracket to Stand Upright using 10mm Do-Nut Caps, 3/8" x 4 1/2" Hex Head Bolt, 3/8" Internal Tooth Lock Washers, 10mm Do-Nut Bases, and 3/8" Lock Nut. See Detail 323.
16. Attach Awning to the top of the Stand Uprights using 3/8" x 1 1/4" P.B.H.C.S. w/Patch, 3/8" Flat Washer, L-Bracket, and 3/8" Lock Nut. See Detail 297.
17. Plumb and level the entire assembly and tighten all fasteners.
18. After entire unit is assembled, pour concrete footings within 4" to the top and taper away from post for water drainage. Allow to cure at least 48 hours before use. Temporary bracing may be required until concrete cures.
19. Check that all hardware connections are securely tightened. Smooth away any sharp edges that may have been created during handling and assembly. Install resilient surfacing within the use zone of play structure in accordance with ASTM specifications F1292, and appropriate for the fall height of each structure. Refer to all applicable safety guidelines.

MAINTENANCE PROCEDURE:

Periodically check hardware for tightness, and tighten as necessary. Always check all parts for breakage or wear, and immediately put equipment out of service until any faulty parts found are repaired or replaced. Also Check all metal parts for rust, paint loss and touch-up if necessary with paint. Check for welded areas and verify integrity. Check periodically resilient surfacing for appropriate depth and remove extraneous materials that could cause injury, infection, or disease. Maintain detailed installation, inspection, maintenance, and repair records for each public-use playground equipment.

MEC241 DUAL GAS PUMP STATION



 = INSTALLATION DETAIL

FINISHED ASSEMBLY

Issued/Revised: 5/30/17

BigToys[®]

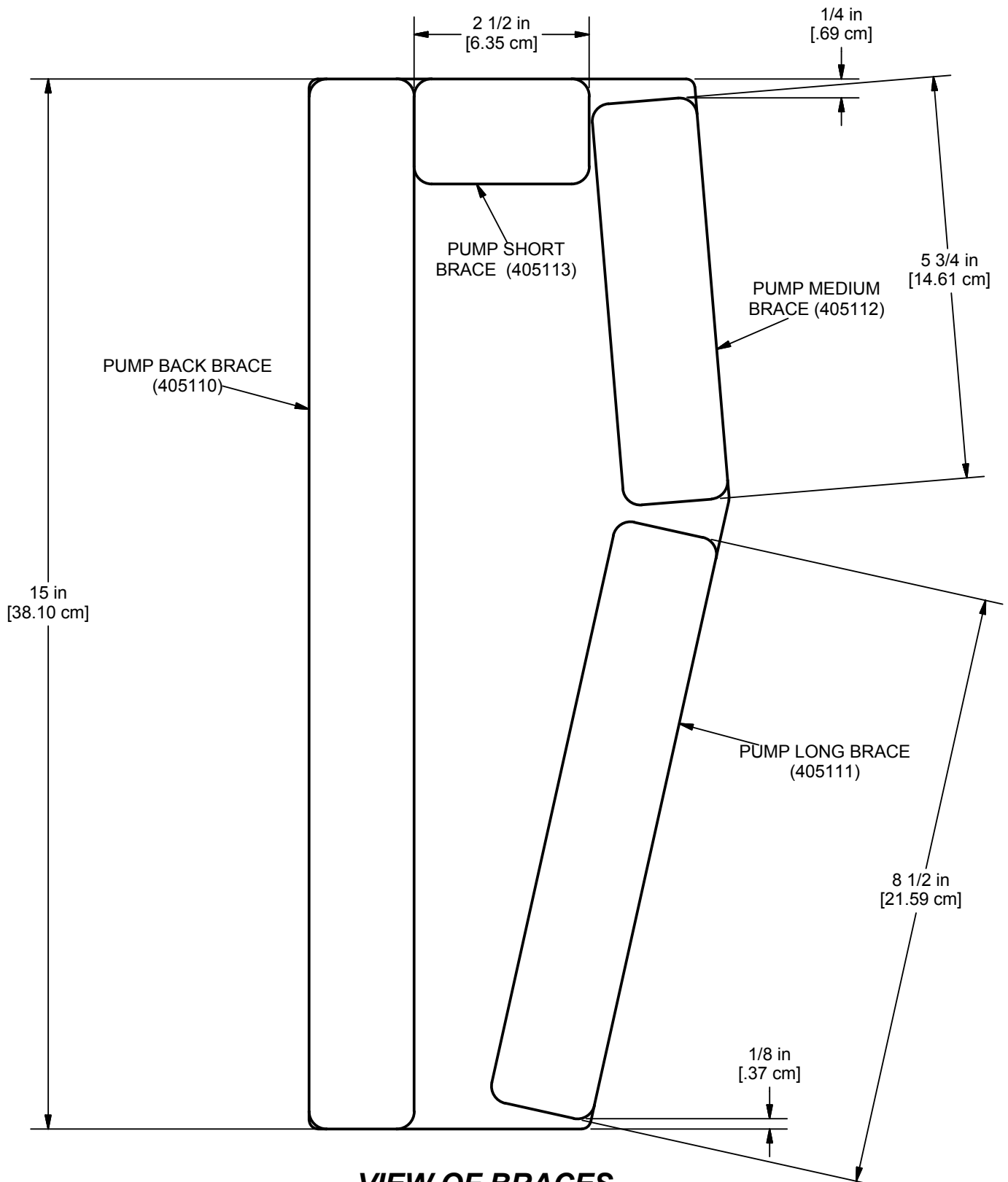
SHEET 4 OF 8

1-866-814-8697

A PLAYCORE Company

bigtoys.com

MEC241 DUEL GAS PUMP STATION

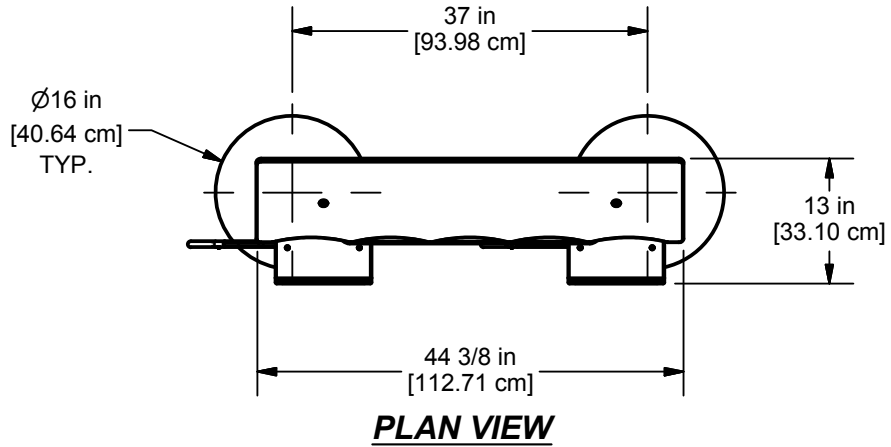


VIEW OF BRACES

BigToys[®]

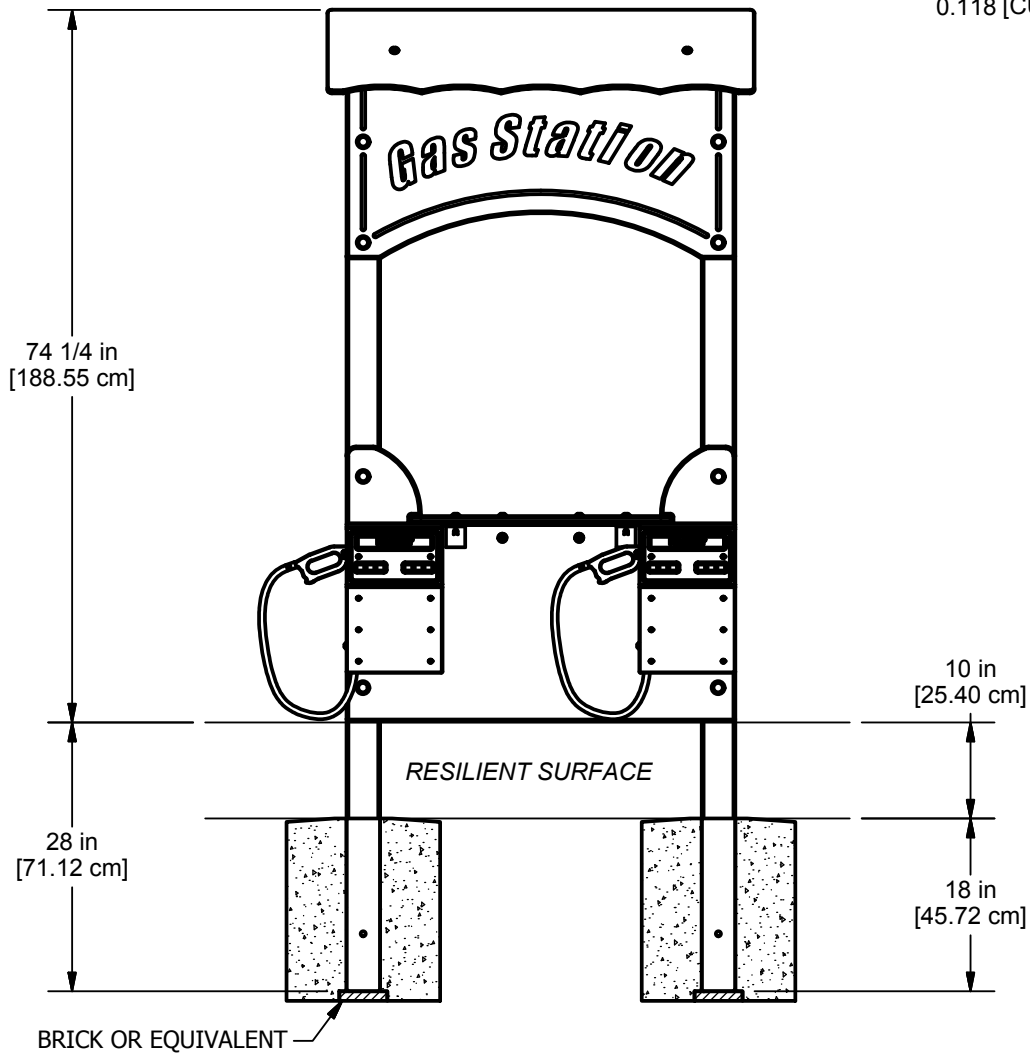
A PLAYCORE Company

MEC241 DUAL GAS PUMP STATION

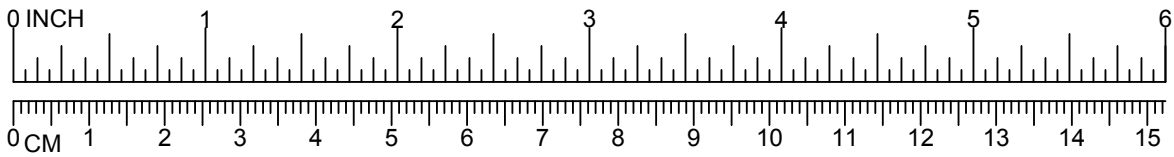


CONCRETE REQUIRED

0.156 CUBIC YARDS
 0.118 [CUBIC METERS]

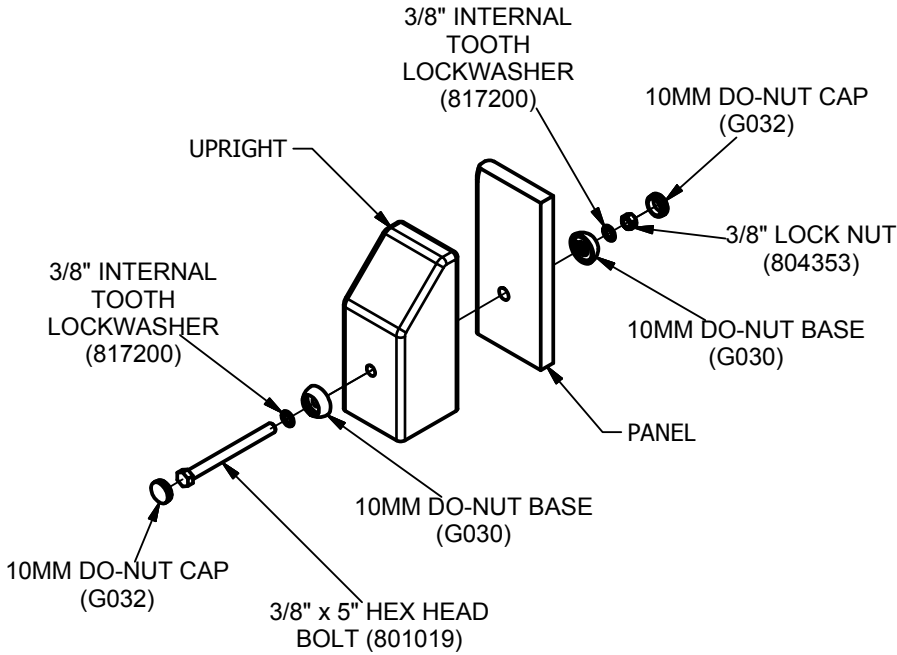


ELEVATION VIEW

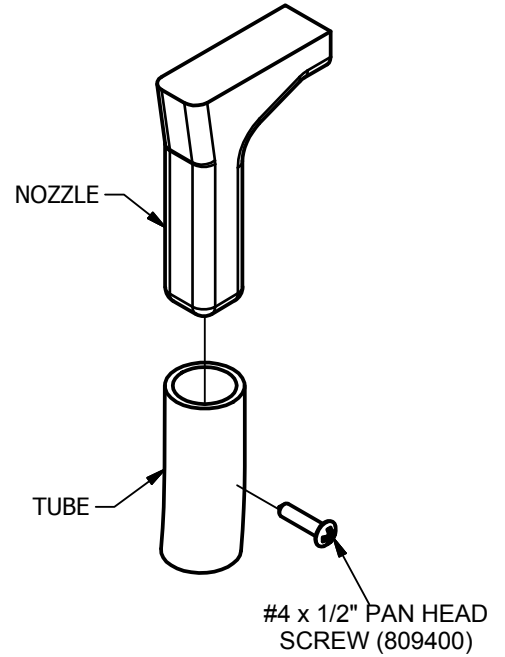


MEC241 DUAL GAS PUMP STATION

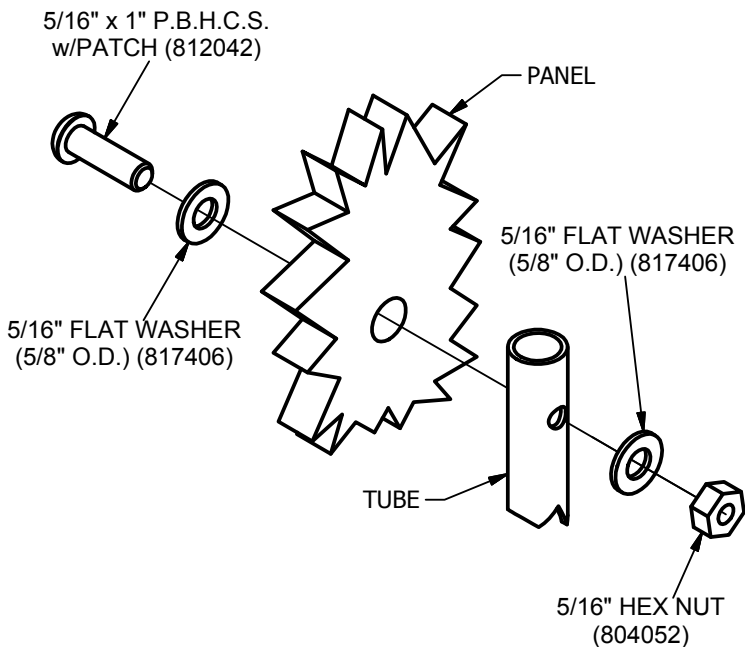
130



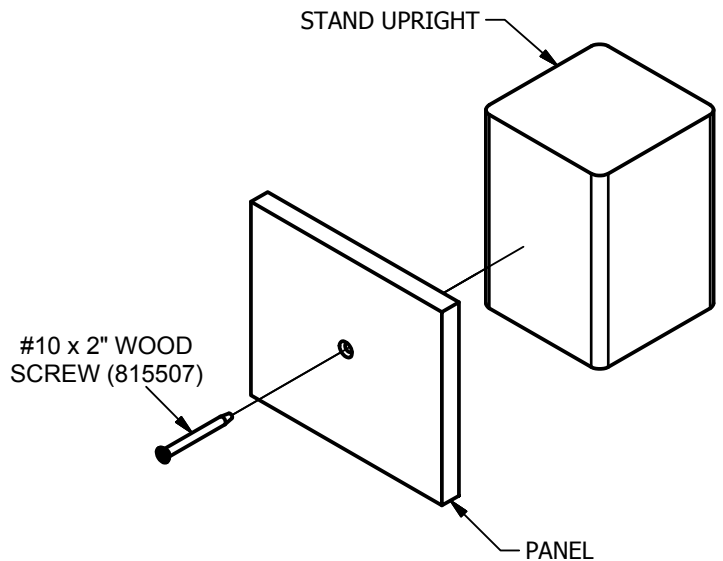
266



267



269



Issued/Revised: 5/30/17

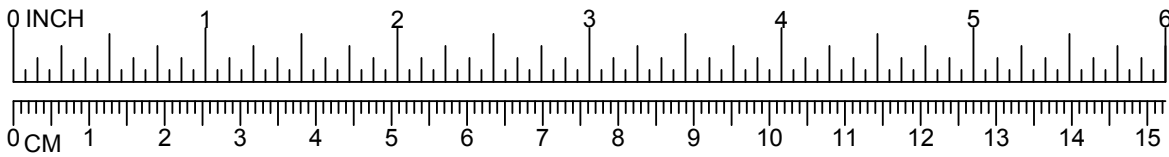
BigToys[®]

A PLAYCORE Company

SHEET 7 OF 8

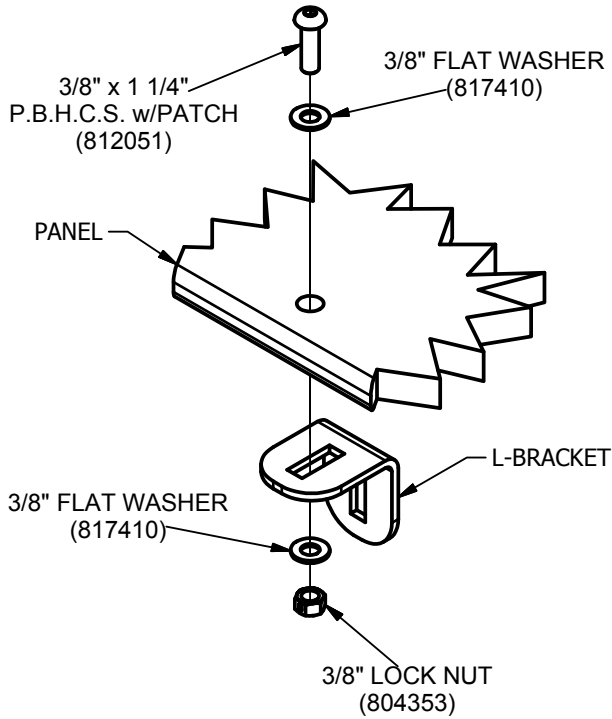
1-866-814-8697

bigtoys.com

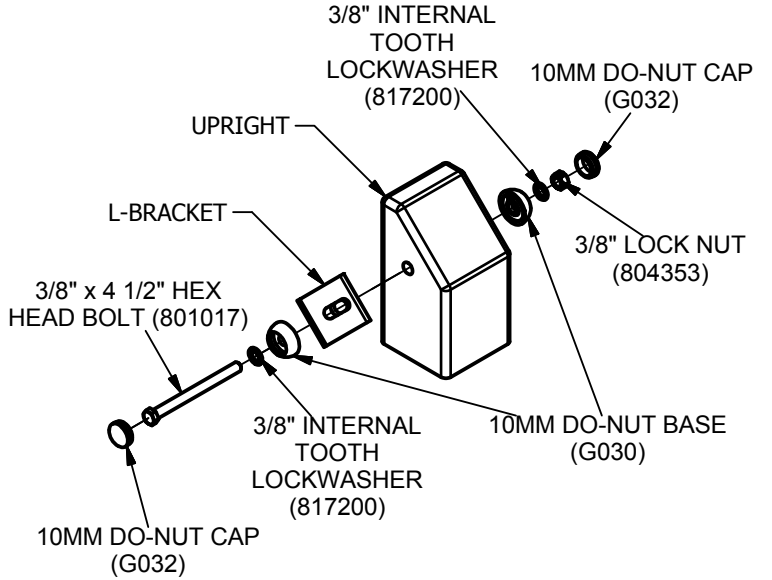


MEC241 DUAL GAS PUMP STATION

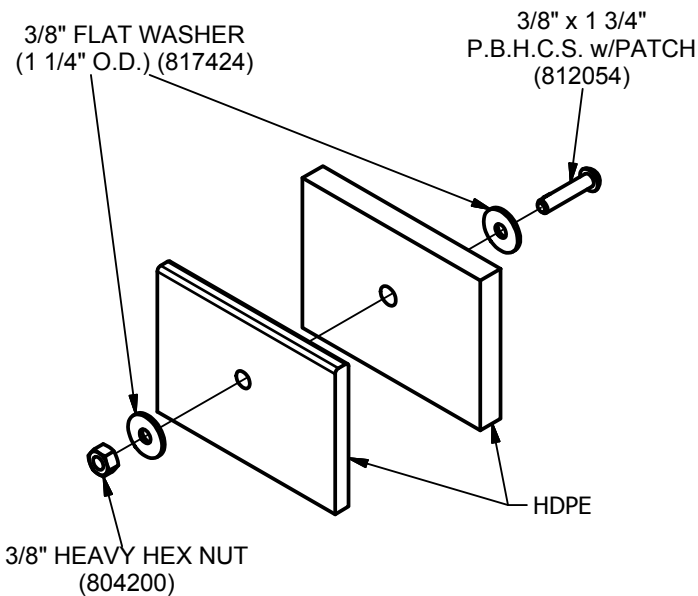
297



323



324



519

