

Dolphin Spring Rider

MEC-128
Installation Instructions



PARTS LIST

DESCRIPTION	No. REQ'D	PART NUMBER
8" x 8" Base Plate	1	304020
Body Panel	2	306377
Seat Panel	1	304638
Back Seat Panel	1	304639
Wave Panel (Beige)	2	306380
Coil Spring - 18 1/2" Lg.	1	304118
15" Rung	2	307892
90° Angle Bracket	2	302334
Bouncer Flat Seat Bracket	1	304644
Cast Aluminum Disc	2	304026
<i>Hardware Complete</i>	1	307904
1/2" x 2 1/2" Carriage Bolt	4	800359*
1/2" Flat Washer	4	817412*
'J' Bolt	4	800000*
1/2" Lock Nut	8	804355*
3/8" Barrel Nut	14	804804*
3/8" x 3/4" Carriage Bolt	4	800252*
3/8" Flat Washer	14	817410*
3/8" x 1 1/2" P.B.H.C.S. w/Patch	8	812053*
3/8" Lockwasher	6	817334*
3/8" x 3/4" P.B.H.C.S. w/Patch	2	812052*
3/8" x 1 3/4" P.B.H.C.S. w/Patch	2	812054*
3/8" x 2 1/4" P.B.H.C.S. w/Patch	2	812056*
Black Plastic Cap	2	304074*
White Plastic Washer	2	304071*

**Unless Otherwise Specified, All Units of Measure are Each
*Included in Hardware**

Warning: Small parts and hardware items may present a potential choking hazard. Promptly remove all unused parts from play area. Any bolt end protruding more than two full threads beyond the face of the nut causes risk of clothing entanglement. Promptly cut-off flush, file smooth, and treat to prevent corrosion.

Note: Peen Tee-Nuts and Flatwashers to match radius of pipe after assembly is complete.

Note: Loctite (supplied by others) should be used on all threaded hardware.

SPECIFICATIONS:

Panels: High-density .750" thick extruded solid polyethylene with color molded in and UV-stabilized.

Spring: Free height 18-1/2", 5.75" O.D. steel tempered, powder-coated black.

Bolt Caps: Injection molded polypropylene, UV-stabilized, white and black in color.

90° Brackets: Formed from 3/16" H.R.steel, powder-coated after fabrication.

Seat Bracket: Welded assembly formed from 11 ga. H.R., powder-coated after fabrication.

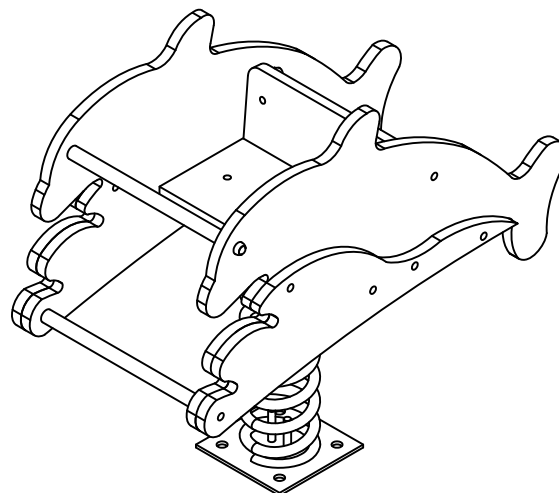
INSTALLATION INSTRUCTIONS:

IMPORTANT: Read through all instruction steps before starting. Apply a few drops of "loctite" (supplied by others) Thread-locking compound to all non-patch hardware to resist loosening from vibrations. Do not attach Plastic Caps onto Plastic Washers until all assembly is completed and satisfactory. Do not fully tighten fasteners until ready to snap on plastic caps (step 7.).

1. Dig footing as shown in Typical Concrete Footing diagram.
2. Use the 8" x 8" Base Plate as a template to make a plywood template for the placement of anchor bolts (plywood not supplied).
3. Attach 1/2" x 10" Anchor Bolt (L) with Washers and Nuts to holes in template, allowing 7/8" of thread to protrude from concrete.
4. Pour concrete footing and lay template on surface in a level position. Force anchor bolts into concrete, allowing 72 hours curing time before removing template.
5. Attach Bouncer Flat Seat Bracket (I) and Base Plate (J) to Coil Spring (K), and fasten tightly using Aluminum Casting Plates (J1), Bolts (X), Washers (P1) and 1/2" Lock Nuts (Q). Note: When inserting Aluminum Casting Plate between Coil Spring, make sure it is rotated to its maximum position to the end of the Coil Spring, both top and bottom. Attach Body Panel (A) and Wave Panel (D) to Bouncer Flat Seat Bracket (I) using Bolts (U), Washers (P) and Nuts (R) as shown in the assembly diagram. Use Bolts (U), Washers (P) Washers (W) and Nuts (R) for remaining holes for Panels (A and D). Attach 15" Rung w/Insert (F) to Body Panel (A) using White Plastic Washer (M), Washer (P), Bolts (E) and Black Plastic Cap (O). Attach 15" Rung w/Insert (F) to Wave Panel (D) using Washer (P), Lockwasher(W) and Bolts (G).
6. Attach Back Seat Panel (C) to Body Panels (A) using Angle Brackets (H), Bolts (T) and Nuts (R) as shown in the assembly drawing. Attach Seat Panel (B) to Bouncer Flat Seat Bracket (I) using Bolts (V), Washers (P) and Nuts (R) as shown in the assembly diagram.
7. Tighten all fasteners and eliminate sharp points and sharp edges (burring) on installed hardware like bolts, nuts, etc. Snap on all Plastic Caps (O) to Plastic Washers (M) by hand or using a rubber mallet. Plastic Caps (O) should cover eyes. (NOTE: do this only after all assembly is completed and satisfactory, as the plastic caps are designed to be very difficult to remove once they are snapped in place. If removal becomes necessary, use the edge of a utility knife to carefully pry off.)
8. Install resilient surfacing material within the use zone of play structure in accordance with ASTM specifications F1292 appropriate for the fall height of each structure. Refer to the Safety Guidelines.

MAINTENANCE PROCEDURE:

Periodically check hardware for tightness, and tighten as necessary. Always check all parts for breakage or wear, and immediately put equipment out of service until any faulty parts found are repaired or replaced. Also Check all metal parts for rust, paint loss and touch-up if necessary with paint. Check for welded areas and verify integrity. Check periodically resilient surfacing for appropriate depth and remove extraneous materials that could cause injury, infection, or disease. Maintain detailed installation, inspection, maintenance, and repair records for each public-use playground equipment.



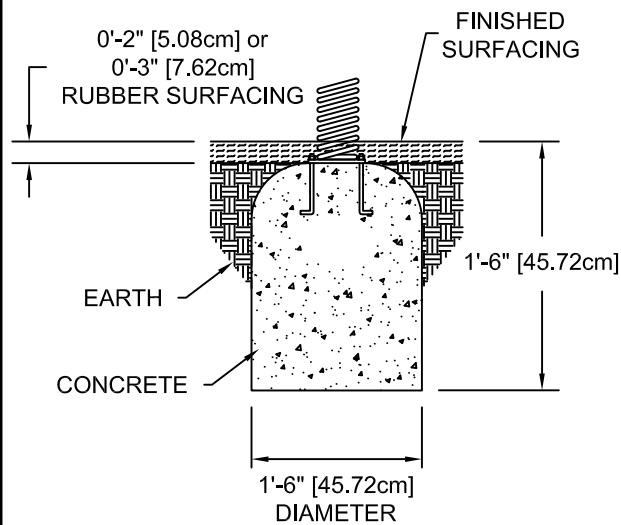
FINISHED ASSEMBLY

BigToys[®]

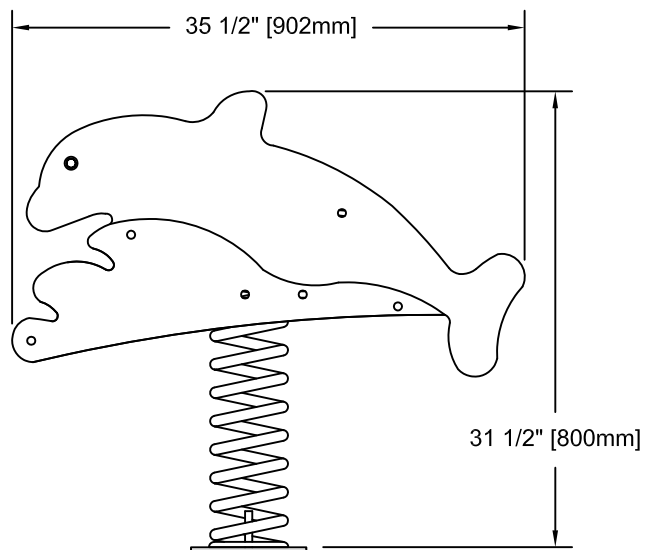
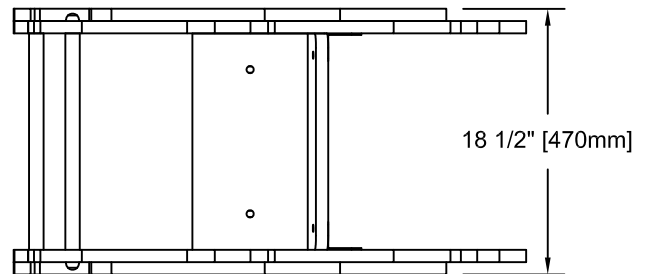
A PLAYCORE Company

bigtoys.com

866-814-8697



CONCRETE FOOTING DETAIL

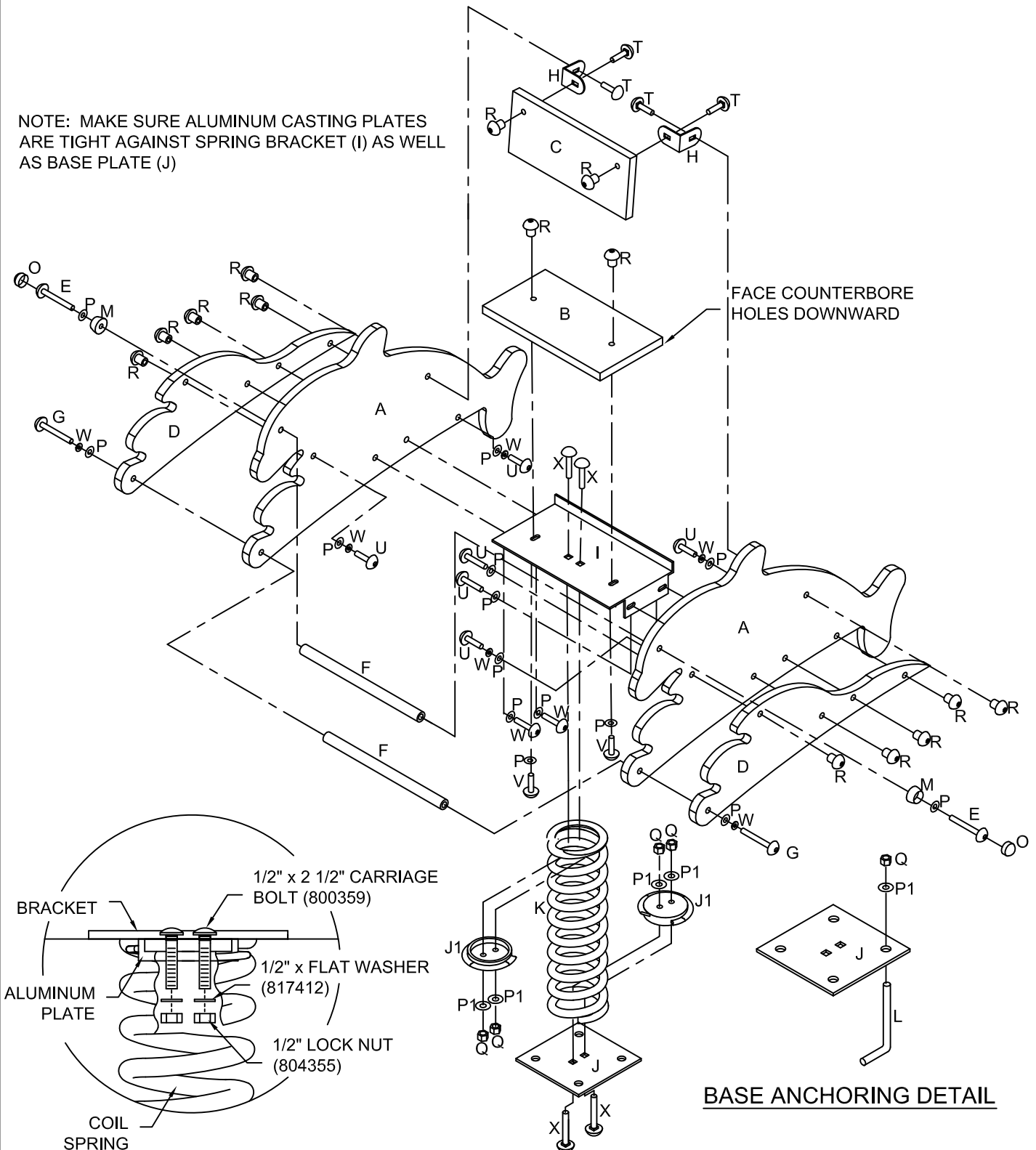


- A = BODY PANEL
- B = SEAT PANEL
- C = BACK SEAT PANEL
- D = WAVE PANEL
- E = 3/8" x 1 3/4" P.B.H.C.S. w/ PATCH
- F = 15" RUNG WITH INSERT
- G = 3/8" x 2 1/4" P.B.H.C.S. w/ PATCH
- H = ANGLE BRACKET 90°
- I = FLAT SEAT BRACKET
- J = 8" x 8" BASE PLATE W/SQUARE HOLES
- J1 = ALUMINUM CASTING PLATE
- K = COIL SPRING 18-1/2" LONG
- L = 'J' BOLT

- (BLUE) (2)
- (RED) (1)
- (RED) (1)
- (BEIGE) (2)
- (RED) (2)
- (WHITE) (2)
- (BLACK) (1)
- (1)
- (2)
- (BLACK) (1)
- (4)

- M = WHITE PLASTIC WASHER (2)
- O = BLACK PLASTIC CAP (2)
- P = 3/8" FLAT WASHER (12)
- P1 = 1/2" FLAT WASHER (4)
- Q = 1/2" LOCK-NUT (8)
- R = 3/8" BARREL NUT (14)
- T = 3/8" X 3/4" CARRIAGE BOLT (4)
- U = 3/8"X1-1/2" HEX-PINNED BOLT (8)
- V = 3/8"X3/4" HEX PINNED BOLT (2)
- W = 3/8" LOCKWASHER (4)
- X = 1/2" X 2-1/2" CARRIAGE BOLT - SS (4)

NOTE: MAKE SURE ALUMINUM CASTING PLATES ARE TIGHT AGAINST SPRING BRACKET (I) AS WELL AS BASE PLATE (J)



BigToys

A PLAYCORE Company

bigtoys.com

366-814-8697

Issued/Revised: 09/14/2015

SHEET 4 OF 4