

MEC221 CAFE STAND

Parts List		
DESCRIPTION	QTY	PART NUMBER
L-BRACKET	6	200205
COUNTER PANEL	1	301371
STORE BOTTOM PANEL	1	402559
STAND UPRIGHT	2	405363
CAFE SIGN	1	405364
AWNING	1	405365
---HARDWARE COMPLETE---	1	405366
10MM DO-NUT BASE	20	G030
10MM DO-NUT CAP	20	G032
ANCHOR ROD	2	402121
3/8" x 3/4" CARRIAGE BOLT	10	800252
3/8" x 4 1/2" HEX HEAD BOLT	2	801017
3/8" x 5" HEX HEAD BOLT	8	801019
3/8" INTERNAL TOOTH LOCKWASHER	20	817200
3/8" LOCK NUT	10	804353
3/8" BARREL NUT	10	804804

*Unless Otherwise Specified, All Units of Measure are Each
Items listed below Hardware Complete line are included with Hardware Complete Number*

Warning: During Installation, Hardware And Small Parts Are Choking Hazards For Young Children. Store Unused Parts Appropriately Until Assembly Is Completed. Once Assembly Is Completed, Remove Any Unused Parts From The Play Environment And Dispose/Save Them In A Secure Location. Any bolt end protruding more than two full threads beyond the face of the nut causes risk of clothing entanglement.

Promptly cut-off flush, file smooth, and treat to prevent corrosion.

Note: Peen Tee-Nuts and Flatwashers to match radius of pipe after assembly is complete.

Note: Loctite (supplied by others) should be used on any non-patch hardware.

SPECIFICATIONS:

L-Bracket: Shall be fabricated from 3/16" x 2" hot rolled flat steel. L-Bracket will have baked on polyester powder-coated finished after fabrication.

Counter Panel, Store Bottom Panel, and Cafe Sign: Shall be precision cut from a single solid sheet of .750" thick UV-stabilized high-density polyethylene with colors molded in. The material will have a density of 60lbs/ft³ and a tensile strength of 4400 PSI (30 Mpa) as determined per procedure C of ASTM D1928. All edges shall have radiuses and all corners for safe play.

Stand Upright: Shall be fabricated from 4" x 4" Nominal HDPE uv-inhibited Plastic Lumber. Density/L.F.:0.061

Awning: Shall be precision cut from a single solid sheet of .50" thick UV-stabilized high-density polyethylene with colors molded in. The material will have a density of 60lbs/ft³ and a tensile strength of 4400 PSI (30 Mpa) as determined per procedure C of ASTM D1928. All edges shall have radiuses and all corners for safe play.

INSTALLATION INSTRUCTIONS:

1. Dig footing holes as shown in Elevation and Plan Views.
2. Locate Stand Uprights and attach Store Bottom Panel using 10mm Do-Nut Base, 3/8" Internal Tooth Lock Washer, 3/8" x 5" Hex Head Bolt, 3/8" Lock Nut, and 10mm Do-Nut Cap. See Detail 130.

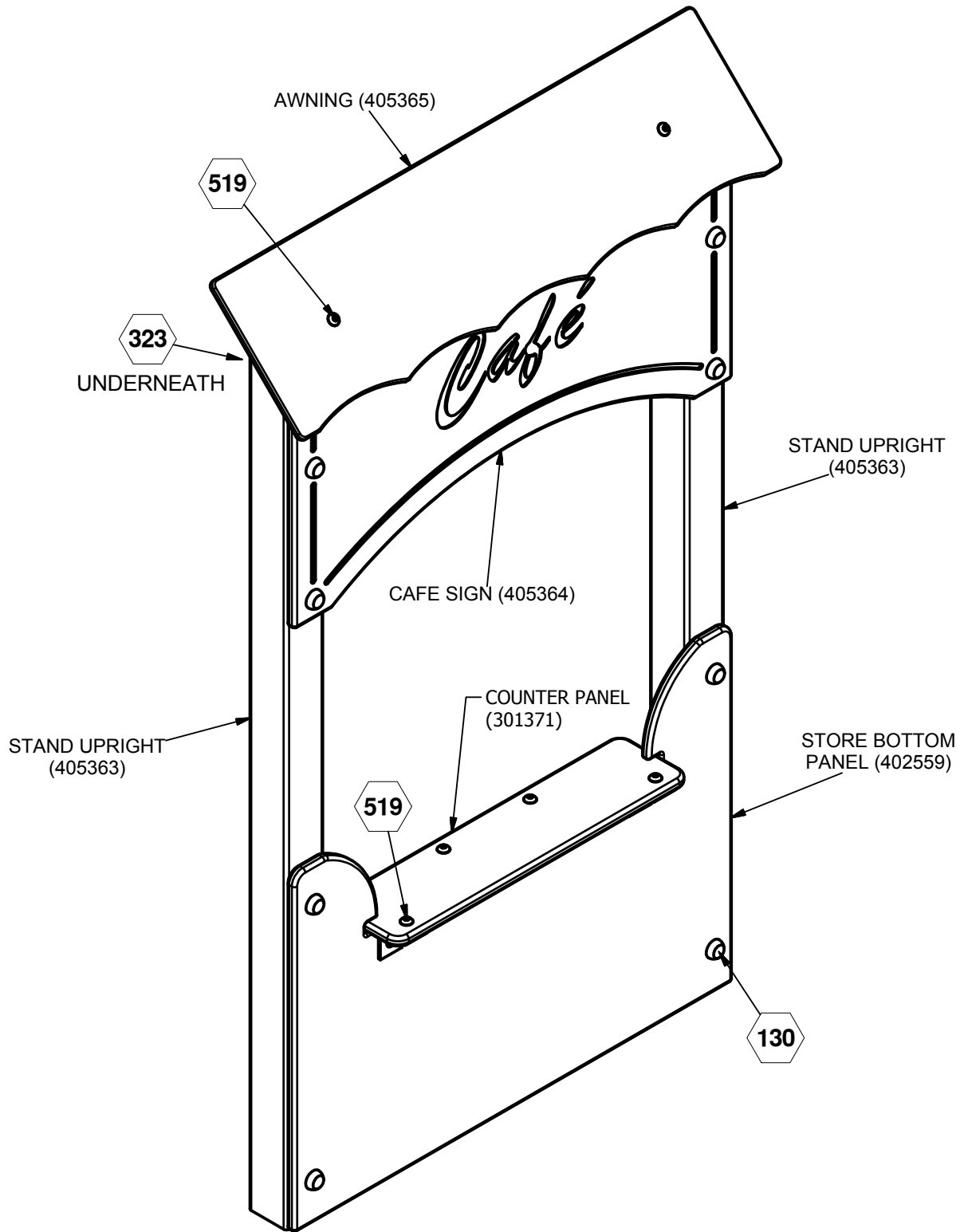
MEC221 CAFE STAND

3. Attach Cafe Sign to Stand Upright using 10mm Do-Nut Base, 3/8" Internal Tooth Lock Washer, 3/8" x 4 3/4" Hex Head Bolt, 3/8" Lock Nut, and 10mm Do-Nut Cap. See Detail 130.
4. Attach L-Bracket to Stand Upright using 10mm Do-Nut Base, 3/8" Internal Tooth Lock Washer, 3/8" x 4 1/2" Hex Head Bolt, 3/8" Lock Nut, and 10mm Do-Nut Cap. See Detail 323.
5. Attach Awning to L-Bracket using 3/8" x 3/4" Carriage Bolt and 3/8" Barrel Nut. See Detail 519.
6. Attach Counter Panel to Store Bottom Panel using L-Bracket, 3/8" x 3/4" Carriage Bolt, and 3/8" Barrel Nut. See Detail 519.
7. Plumb and level the entire assembly and tighten all fasteners.
8. After entire unit is assembled, pour concrete footings within 4" to the top and taper away from post for water drainage. Allow to cure at least 48 hours before use. Temporary bracing may be required until concrete cures.
9. When the structure is finished and satisfactory, eliminate sharp points and sharp edges (burring) on installed hardware like bolts, nuts, etc. Install resilient surfacing material within the use zone of play structure in accordance with ASTM specifications F1292 appropriate for the fall height of each structure. Refer to the safety guidelines.

MAINTENANCE PROCEDURE:

Periodically check hardware for tightness, and tighten as necessary. Always check all parts for breakage or wear, and immediately put equipment out of service until any faulty parts found are repaired or replaced. Also Check all metal parts for rust, paint loss and touch-up if necessary with paint. Check for welded areas and verify integrity. Check periodically resilient surfacing for appropriate depth and remove extraneous materials that could cause injury, infection, or disease. Maintain detailed installation, inspection, maintenance, and repair records for each public-use playground equipment.

MEC221 CAFE STAND



= INSTALLATION DETAIL

Issued/Revised: 5/30/17

FINISHED ASSEMBLY

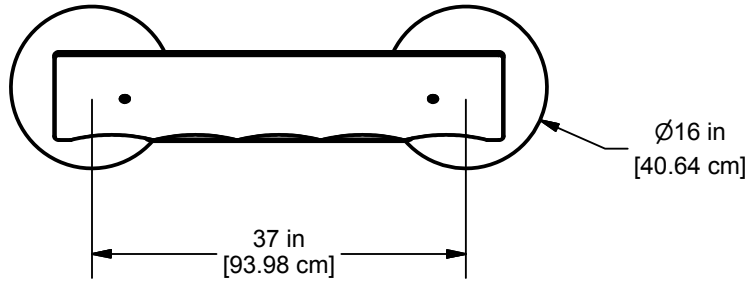
BigToys[®]

A PLAYCORE Company

COMPONENTS SHOWN IN
HIDDEN LINES ARE SOLD SEPARATELY

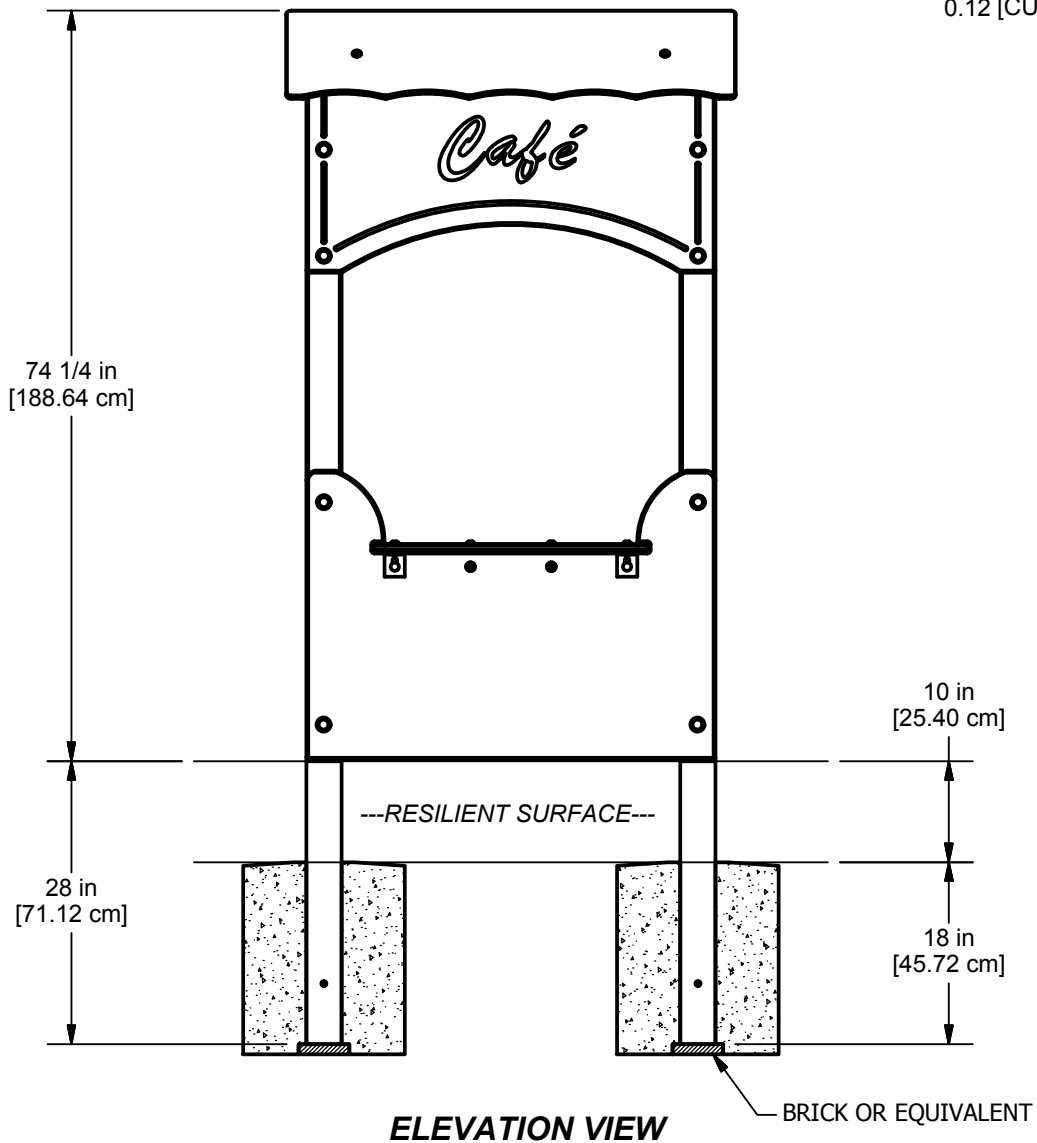
SHEET 3 OF 5

MEC221 CAFE STAND

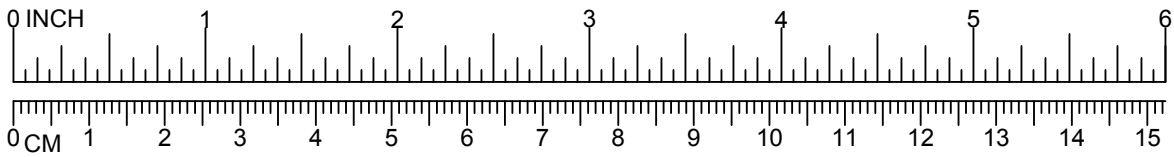


PLAN VIEW

CONCRETE REQUIRED
 0.16 CUBIC YARDS
 0.12 [CUBIC METERS]



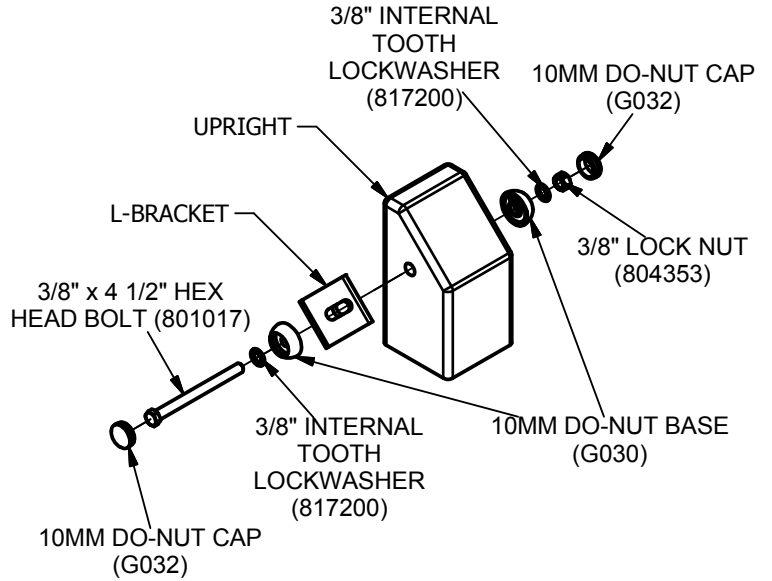
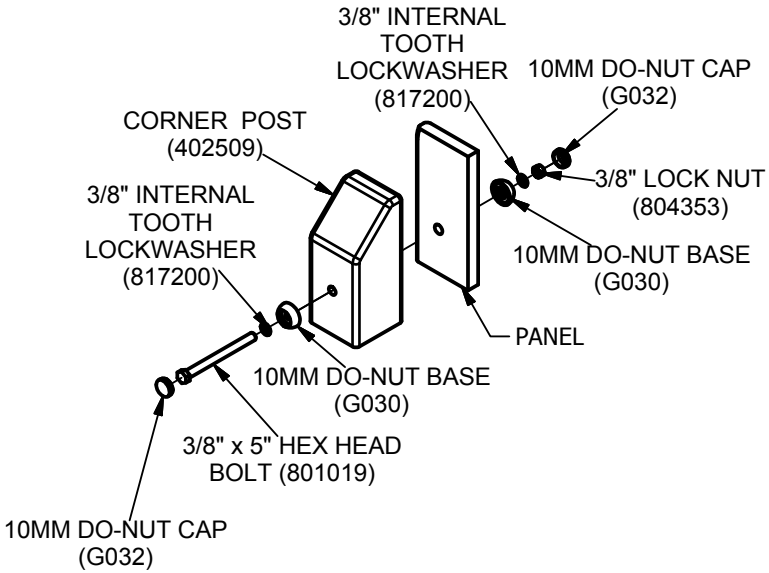
ELEVATION VIEW



MEC221 CAFE STAND

130

323



519

