

MEC-105 BALANCE BEAM

Parts List			
ITEM	DESCRIPTION	QTY	PART NUMBER
1	BALANCE BEAM	2	401799
2	BALANCE BEAM LEG	4	401682
	HARDWARE COMPLETE	1	404665
3	HOLE PLUG, BROWN	4	W796
	ANCHOR ROD	4	402121
	3/8" NYLON INSERT LOCK NUT (FINE THREAD)	4	804380
	3/8" FLAT WASHER (1" O.D.)	4	817401
	3/8" x 3" CARRIAGE BOLT	4	800261
	LABEL PACKAGE, 2-5	1	E402E

Unless Otherwise Specified, All Units of Measure are Each

Items listed below Hardware Complete line are included with Hardware Complete Number

Warning: During Installation, Hardware And Small Parts Are Choking Hazards For Young Children. Store Unused Parts Appropriately Until Assembly Is Completed. Once Assembly Is Completed, Remove Any Unused Parts From The Play Environment And Dispose/Save Them In A Secure Location. Any bolt end protruding more than two full threads beyond the face of the nut causes risk of clothing entanglement. Promptly cut-off flush, file smooth, and treat to prevent corrosion.

Note: Peen Tee-Nuts and Flatwashers to match radius of pipe after assembly is complete.

Note: Loctite (supplied by others) should be used on any non-patch hardware.

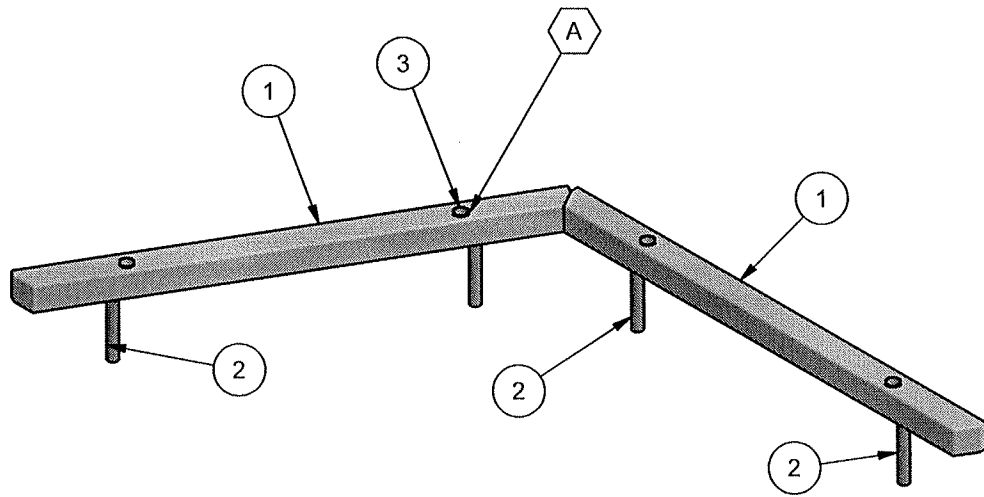
INSTALLATION INSTRUCTIONS:

1. Dig footing holes as shown in Plan and Elevation Views.
2. Connect Legs to Beam using 3/8" x 3" Carriage Bolt, 3/8" Flatwasher, and 3/8" Hex Nut, as shown in Detail "A". Drive in Hole Plugs until seated.
3. Insert Anchor Rods into Legs and place Legs in footing holes. Plumb and level assembly. Allow concrete to cure 48 hours before using.

MAINTENANCE PROCEDURE:

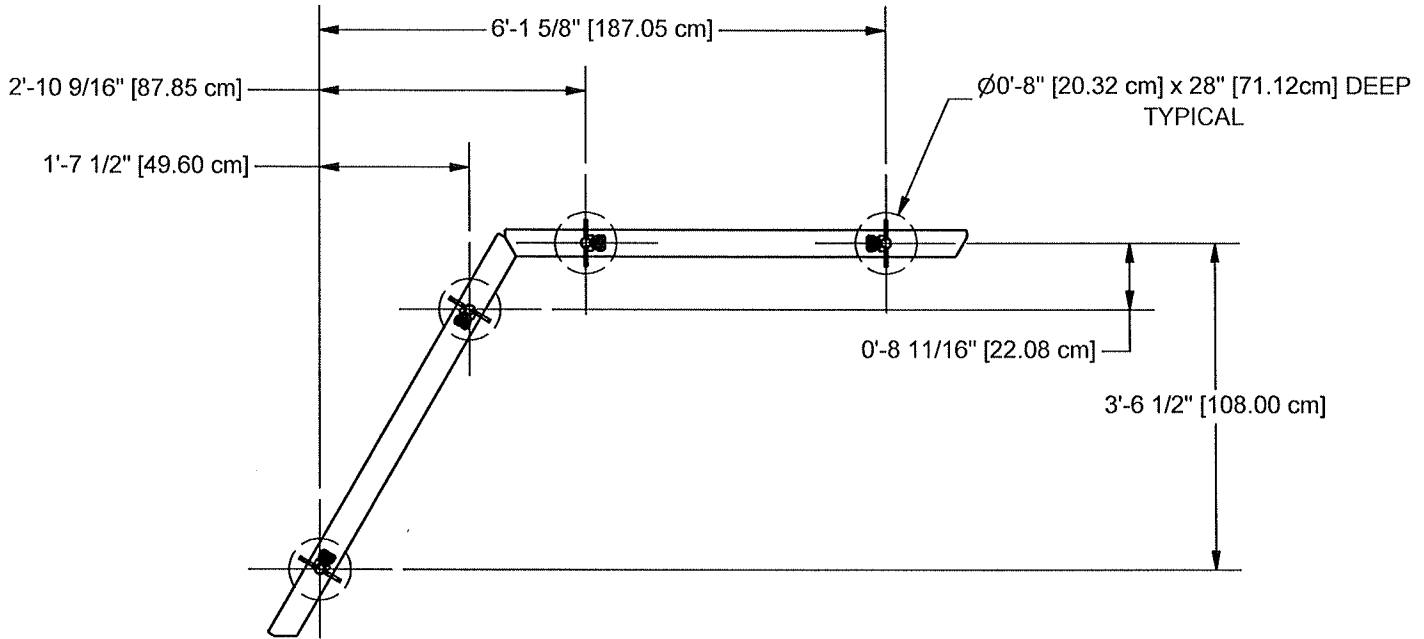
Periodically check hardware for tightness, and tighten as necessary. Always check all parts for breakage or wear, and immediately put equipment out of service until any faulty parts found are repaired or replaced. Also Check all metal parts for rust, paint loss and touch-up if necessary with paint. Check for welded areas and verify integrity. Check periodically resilient surfacing for appropriate depth and remove extraneous materials that could cause injury, infection, or disease. Maintain detailed installation, inspection, maintenance, and repair records for each public-use playground equipment.

MEC-105 BALANCE BEAM



FINISHED ASSEMBLY

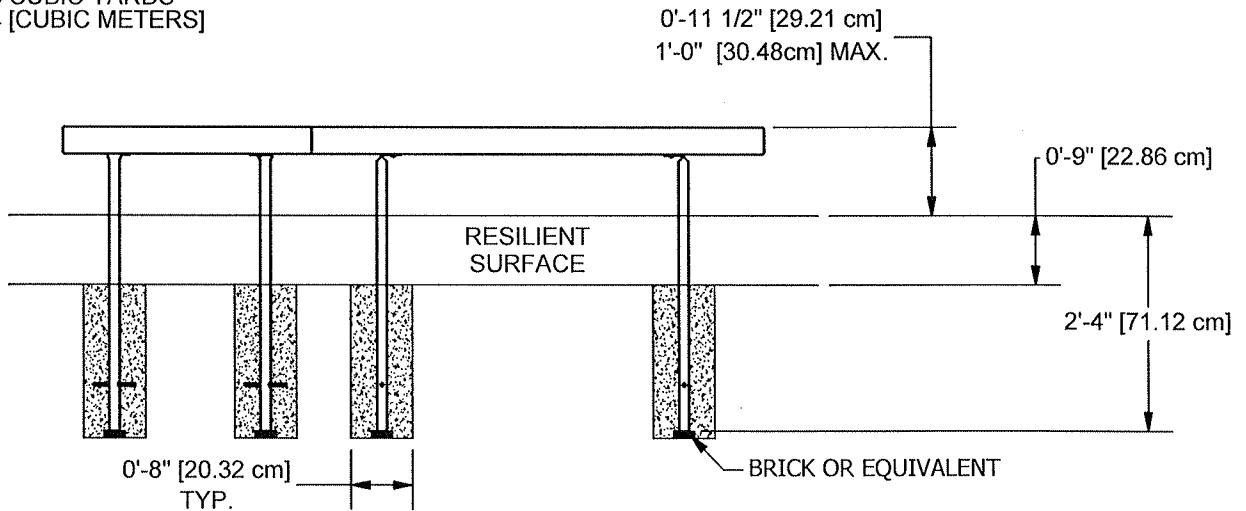
MEC-105 BALANCE BEAM



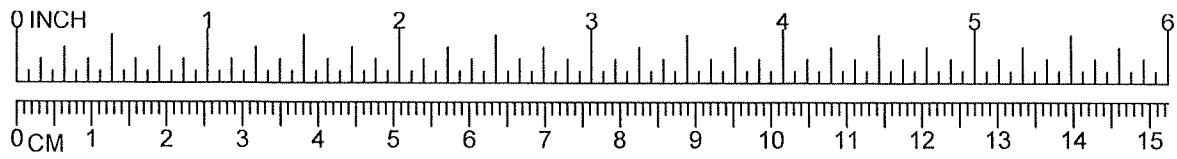
PLAN VIEW

CONCRETE REQUIRED

.08 CUBIC YARDS
.04 [CUBIC METERS]



ELEVATION VIEW



MEC-105 BALANCE BEAM

