

Ship's Bow M59033

Ship's Bow Surface Mount M59034

PARTS LIST

DESCRIPTION	M59033	M59034	PART NUMBER
Anchor Panel	2	2	305230
Ships Bow Side Panel	2	2	305225
Ships Bow Seat Panel	1	1	305229
End Flange	2	0	305227
End Flange-Left	0	1	305231
End Flange-Right	0	1	305238
Center Flange	1	0	305196
Center Flange-SM	0	1	305234
68° Angle Bracket	4	4	305208
5" Dome Cap	1	1	212993
<i>Hardware Complete</i>	1	1	305241
3/8" Barrel Nut	26	26	804804*
3/8" Flat Washer	18	18	817410*
3/8" x 1 1/4" P.B.H.C.S. w/Patch	4	4	812051*
3/8" x 3/4" P.B.H.C.S. w/Patch	14	14	812052*
3/8" x 3/4" Carriage Bolt	8	8	800252*
3/16" x 13/32" Drive Rivet	2	2	805366*

**Unless Otherwise Specified, All Units of Measure are Each
*Included in Hardware**

Warning: Small parts and hardware items may present a potential choking hazard. Promptly remove all unused parts from play area. Any bolt end protruding more than two full threads beyond the face of the nut causes risk of clothing entanglement. Promptly cut-off flush, file smooth, and treat to prevent corrosion.

Note: Peen Tee-Nuts and Flatwashers to match radius of pipe after assembly is complete.

Note: Loctite (supplied by others) should be used on all threaded hardware.

SPECIFICATIONS:

Ship's Bow Center Post is fabricated from 5" O.D. 11-gauge galvanized steel tubing with aluminum cap at top and 3/16" steel flanges (and 1/4" x 8" x 8" plate welded to post on surface mount), all posts are polyester powder-coated after fabrication. Ship's Bow Side Posts are fabricated from 2-3/8" O.D. 10-gauge steel tubing with 11-gauge galvanized cap at top and 3/16" steel flanges (and 1/4" x 8" x 8" plate welded to side posts on surface mount). Entire post is polyester powder-coated after fabrication. All welds are steel welds. Panel is cut from a sheet of high-density 3/4" thick solid polyethylene with color molded in and UV-Stabilized.

Primary hardware is stainless steel.

Weight: 228 lb. / 103.6 kg

INSTALLATION INSTRUCTIONS:

OPTIONAL IN-GROUND INSTALLATION:

1. Dig footing holes as shown in the assembly diagram. Refer to your overhead drawing for location.
2. Position Center Post and Side Posts into the footing holes and attach Side Panels to Posts using 3/8" x 3/4" P.B.H.C.S. w/Patch, 3/8" Flat Washers and 3/8" Barrel Nuts as shown. Attach Cap to Center Flange with 3/16" x 13/32" Drive Rivets as shown.
3. Attach Seat Panel to Side Panels using Angle Brackets, 3/8" x 3/4" Carriage Bolts and 3/8" Barrel Nuts as shown. Attach Anchors to Side Panels using 3/8" x 1-1/4" P.B.H.C.S. w/Patch, 3/8" Flat Washers and 3/8" Barrel Nuts as shown in the assembly diagram.
4. Plumb and level the entire Ship's Bow and pour concrete footing within 4" to the top of post to allow water drainage. Allow to cure at least 48 hours before use.



Ship's Bow M59033 Ship's Bow Surface Mount M59034

5. Install resilient surfacing material within the use zone of play structure in accordance with ASTM specifications F1292 appropriate for the fall height of each structure. Refer to the Safety Guidelines.

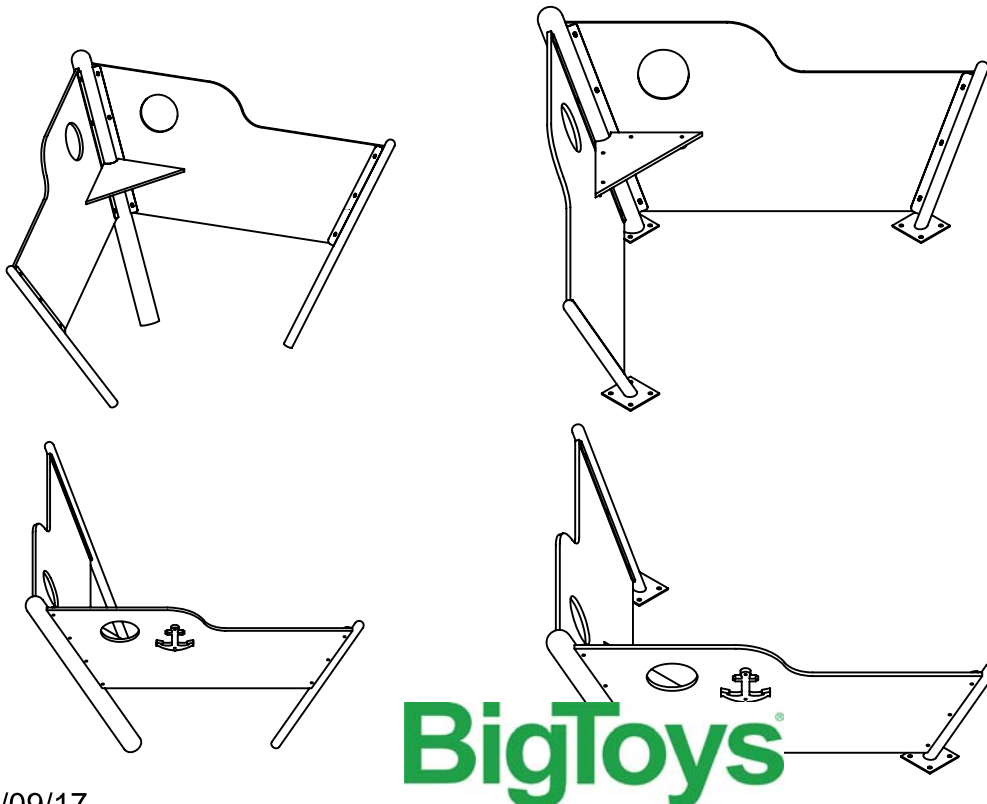
OPTIONAL SURFACE-MOUNT INSTALLATION:

1. Pour concrete slab; allow to cure for a minimum of 48 hours.
2. Position Center Post and Side Posts and attach Side Panels to Posts using 3/8" x 3/4" P.B.H.C.S. w/Patch, 3/8" Flat Washers and 3/8" Barrel Nuts as shown. Attach Cap to Center Flange with 3/16" x 13/32" Drive Rivets as shown.
3. Attach Seat Panel to Side Panels using Angle Brackets, 3/8" x 3/4" Carriage Bolts and 3/8" Barrel Nuts as shown. Attach Anchors to Side Panels using 3/8" x 1-1/4" P.B.H.C.S. w/Patch, 3/8" Flat Washers and 3/8" Barrel Nuts as shown in the assembly diagram.
4. Plumb, level and brace the entire assembly onto the concrete slab. Use expansions-Type Anchor Bolts (supplied by others) to fasten the entire assembly on concrete slab.
5. Install resilient surfacing material within the use zone of play structure in accordance with ASTM specifications F1292 appropriate for the fall height of each structure. Refer to the Safety Guidelines.

MAINTENANCE PROCEDURE:

Periodically check hardware for tightness, and tighten as necessary. Always check all parts for breakage or wear, and immediately put equipment out of service until any faulty parts found are repaired or replaced. Also Check for rust or paint loss and touch-up if necessary with paint. Check welded areas and verify integrity. Check for cracks, gouges or breakage on plastic, check for integrity of the plastic, keep plastic clean of any extraneous substances, verify that any deformation does not create entrapment as specified on ASTM F1487-01 section 6. Check periodically resilient surfacing for appropriate depth and remove extraneous materials that could cause injury, infection, or disease. Maintain detailed installation, inspection, maintenance, and repair records for each public-use playground equipment.

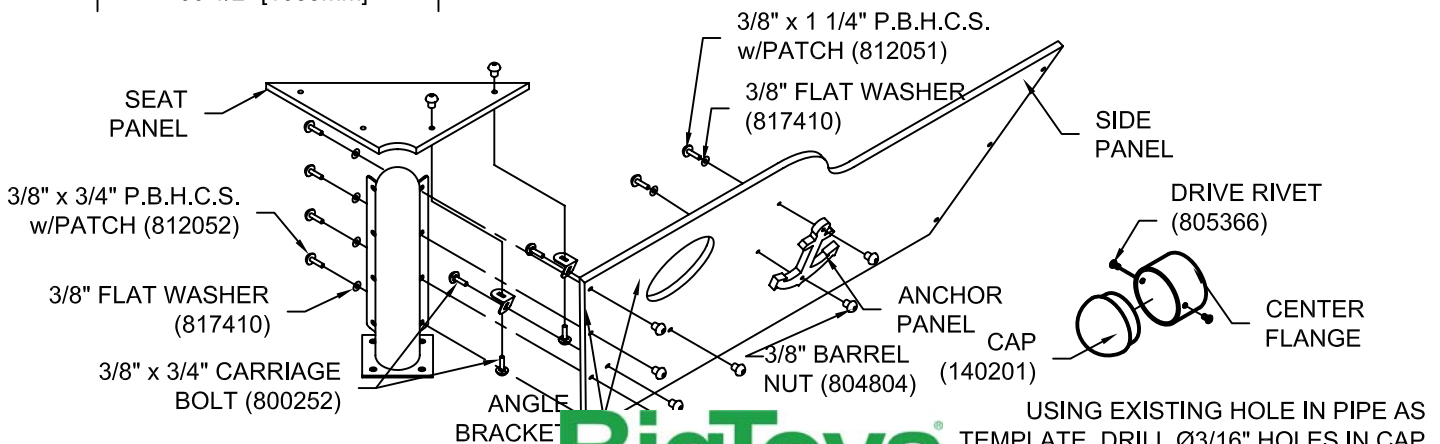
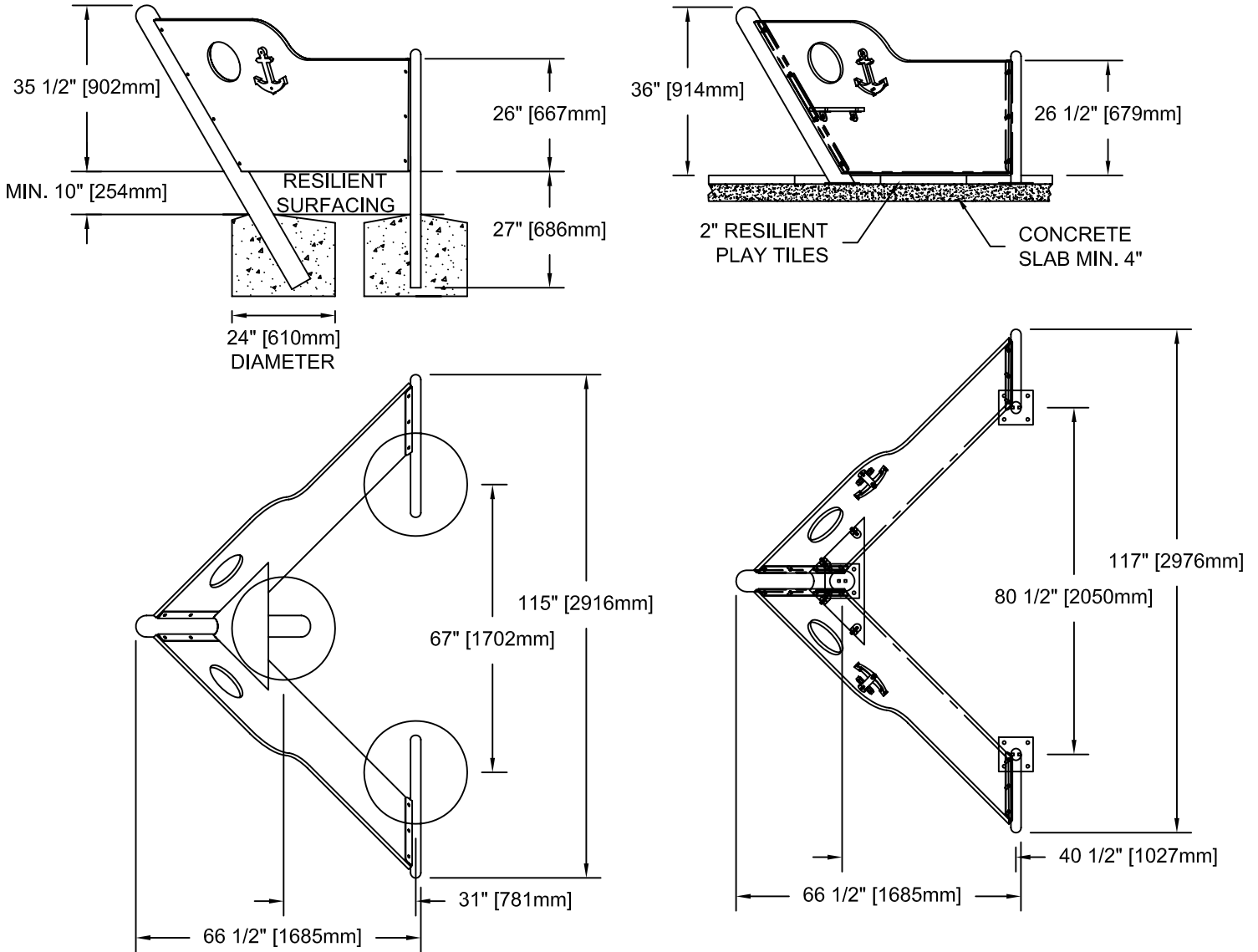
FINISHED ASSEMBLY



BigToys[®]

A PLAYCORE Company

Ship's Bow M59033 Ship's Bow Surface Mount M59034



USING EXISTING HOLE IN PIPE AS TEMPLATE, DRILL Ø3/16" HOLES IN CAP TO RECEIVE RIVETS)
SHEET 3 OF 3