

EC-012 TODDLER PULL-UP MIRROR MEC-012 TODDLER PULL-UP MIRROR

| Parts List | | | |
|---------------------------------|-------|--------|-------------|
| DESCRIPTION | EC012 | MEC012 | PART NUMBER |
| MIRROR ENCLOSURE W/HANDGRIP | 1 | 0 | L767 |
| MIRROR ENCLOSURE W/ HANDGRIP | 0 | 1 | M767 |
| 24" HANDGRIP | 1 | 1 | 401691 |
| ENCLOSURE SHROUD | 1 | 1 | 401970 |
| COLUMN, 5' | 2 | 0 | Z005 |
| COLUMN, 5' | 0 | 2 | 405034 |
| END CAP | 2 | 2 | G010 |
| HARDWARE COMPLETE | 1 | 0 | 405035 |
| HARDWARE COMPLETE | 0 | 1 | 405036 |
| COLUMN END FITTING - WOOD | 2 | 0 | Z600* |
| COLUMN END FITTING - METAL | 0 | 2 | M600* |
| 12MM DO-NUT BASE | 8 | 8 | G034* |
| 12MM DO-NUT CAP | 8 | 8 | G036* |
| #8 x 3/4" WOOD SCREW | 6 | 6 | 815517* |
| #10 x 1/2" SHEET METAL SCREW | 0 | 6 | 810062* |
| 1/2" FLATWASHER (7/8" O.D.) | 4 | 4 | 817465* |
| 1/2" INTERNAL TOOTH LOCK WASHER | 4 | 4 | 817201* |
| 1/2" x 2 3/4" HEX HEAD BOLT | 2 | 2 | 801210* |
| 1/2" HEX NUT | 2 | 2 | 804055* |
| 1/2" x 2 1/2" HEX HEAD BOLT | 4 | 0 | 801221* |
| #10 x 2" WOOD SCREW | 6 | 0 | 815507* |
| HOLE PLUG | 20 | 0 | G005G* |
| EAGLE FASTENER | 4 | 0 | G000* |
| 1/2" X 5" HEX HEAD BOLT | 0 | 4 | 800807* |
| 10" PIPE | 2 | 0 | 401991* |
| LABEL, 6-23 MONTHS | 0 | 1 | E401I* |
| LABEL, 6-23 MONTHS | 1 | 0 | H400I* |

Unless Otherwise Specified, All Units of Measure are Each

Items listed below Hardware Complete line are included with Hardware Complete Number

Warning: During Installation, Hardware And Small Parts Are Choking Hazards For Young Children. Store Unused Parts Appropriately Until Assembly Is Completed. Once Assembly Is Completed, Remove Any Unused Parts From The Play Environment And Dispose/Save Them In A Secure Location. Any bolt end protruding more than two full threads beyond the face of the nut causes risk of clothing entanglement. Promptly cut-off flush, file smooth, and treat to prevent corrosion.

Note: Peen Tee-Nuts and Flatwashers to match radius of pipe after assembly is complete.

Note: Loctite (supplied by others) should be used on any non-patch hardware.

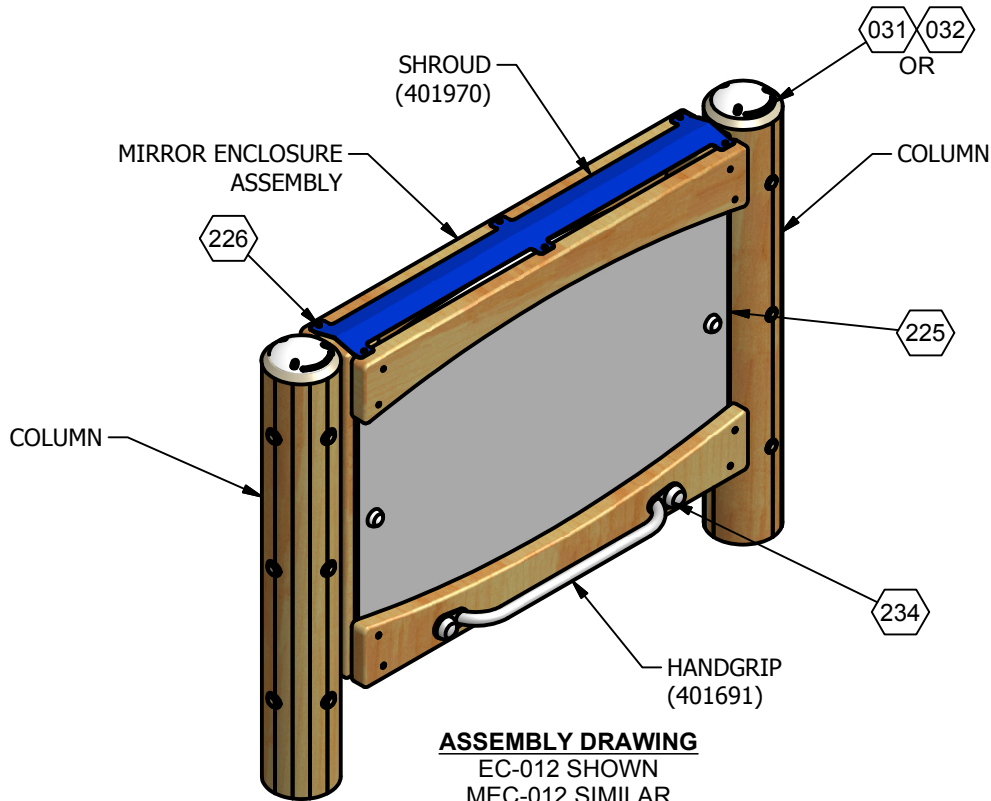
EC-012 TODDLER PULL-UP MIRROR MEC-012 TODDLER PULL-UP MIRROR

INSTALLATION INSTRUCTIONS:

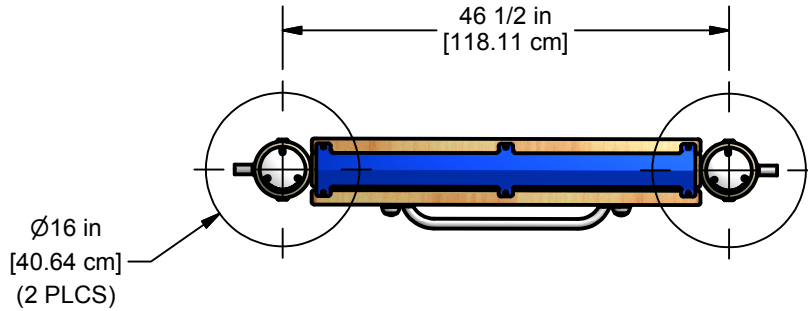
1. Dig footing holes as shown in Elevation and Plan views.
2. Insert Columns into holes using brick or equivalent for support as shown in Elevation View.
3. (For EC-012 only) Locate holes in Column that will receive Mirror Enclosure, drive Eagle Fasteners into these holes. Fill open column holes above the surfacing line with hole plugs. Refer to Typical Eagle Fastener Installation Instructions. Attach Column End Fitting and Caps with #10 Screws. Refer to Detail 031 or Detail 032.
4. Attach Enclosure to Columns using Do-Nut Base, 1/2" Flatwasher, 1/2" x 5" Hex Head Bolt, (or 1/2" x 5 1/2" Hex Head Bolt for EC-012) and Do-Nut Cap. See Detail 225.
5. Attach Shroud to top of Enclosure using #8 x 3/4" Wood Screws. See Detail 226. Attach Handgrip to Enclosure using Do-Nut Base, 1/2" Hex Nut, 1/2" Lockwasher, 1/2" x 2 3/4" Hex Bolt and Do-Nut Cap. Refer to Detail 234.
6. Plumb and level the entire assembly and tighten all fasteners. Pour concrete as shown in Elevation View.
7. When the structure is finished and satisfactory, eliminate sharp points and edges (burring) on installed hardware like bolts, nuts, etc. Install resilient surfacing material within the use zone of play structure in accordance with ASTM specifications F1292 appropriate for the fall height of each structure. Refer to the Safety Guidelines.

MAINTENANCE PROCEDURE:

Periodically check hardware for tightness, and tighten as necessary. Always check all parts for breakage or wear, and immediately put equipment out of service until any faulty parts found are repaired or replaced. Also Check all metal parts for rust, paint loss and touch-up if necessary with paint. Check for welded areas and verify integrity. Check periodically resilient surfacing for appropriate depth and remove extraneous materials that could cause injury, infection, or disease. Maintain detailed installation, inspection, maintenance, and repair records for each public-use playground equipment.

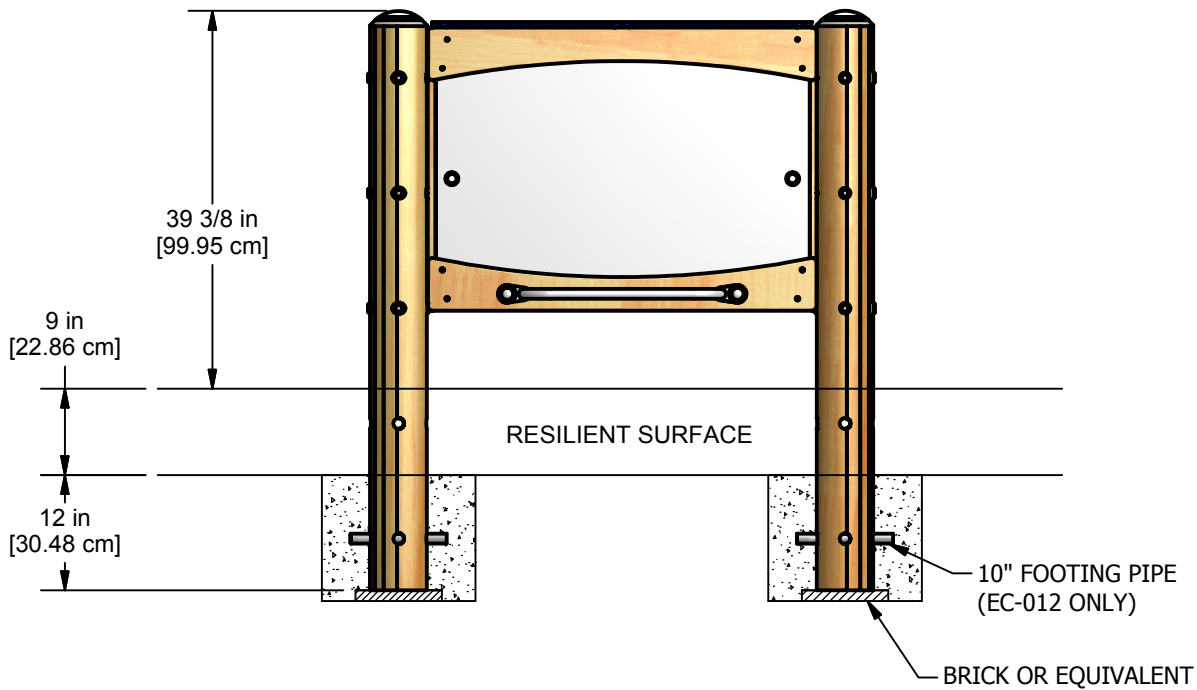


EC-012 TODDLER PULL-UP MIRROR
MEC-012 TODDLER PULL-UP MIRROR

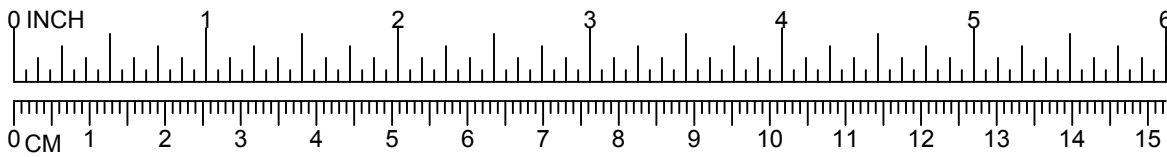


PLAN VIEW

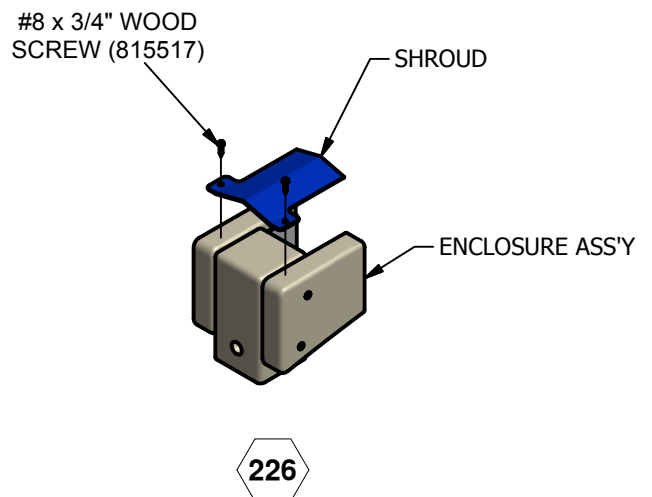
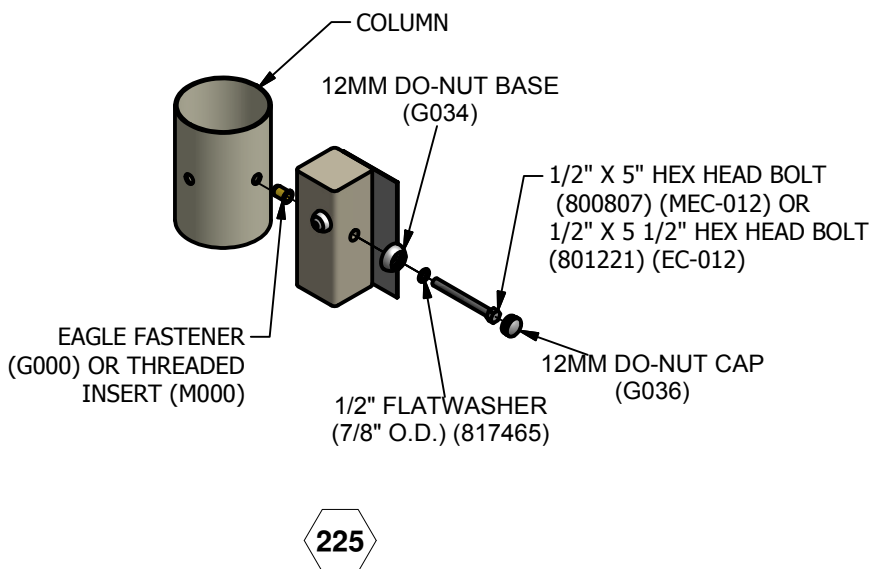
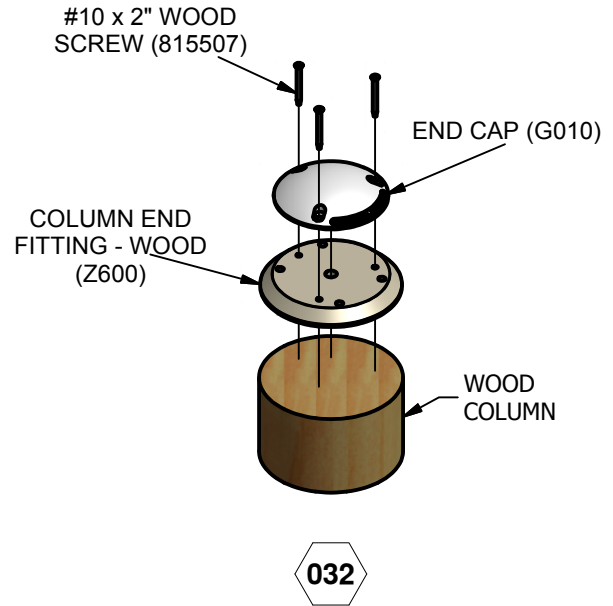
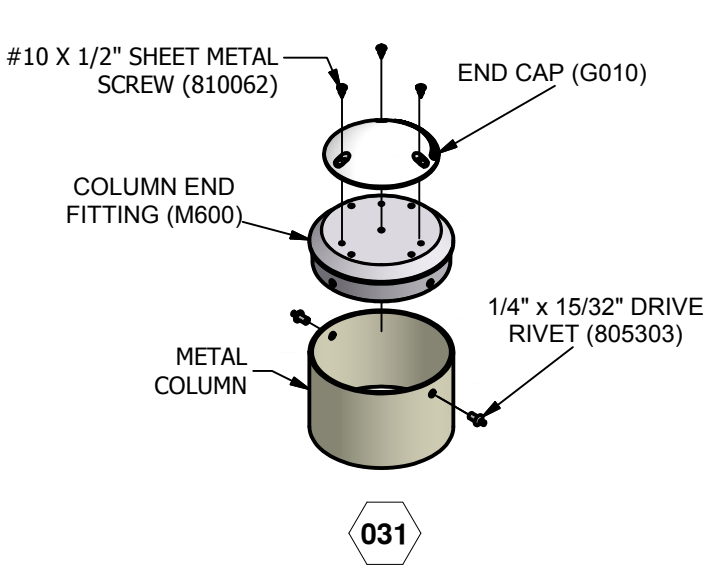
CONCRETE REQUIRED
.10 CUBIC YARDS
.08 [CUBIC METERS]

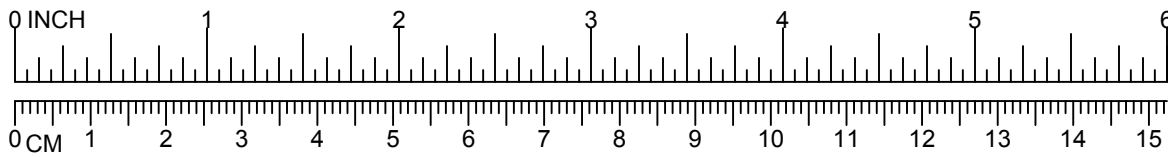


ELEVATION VIEW

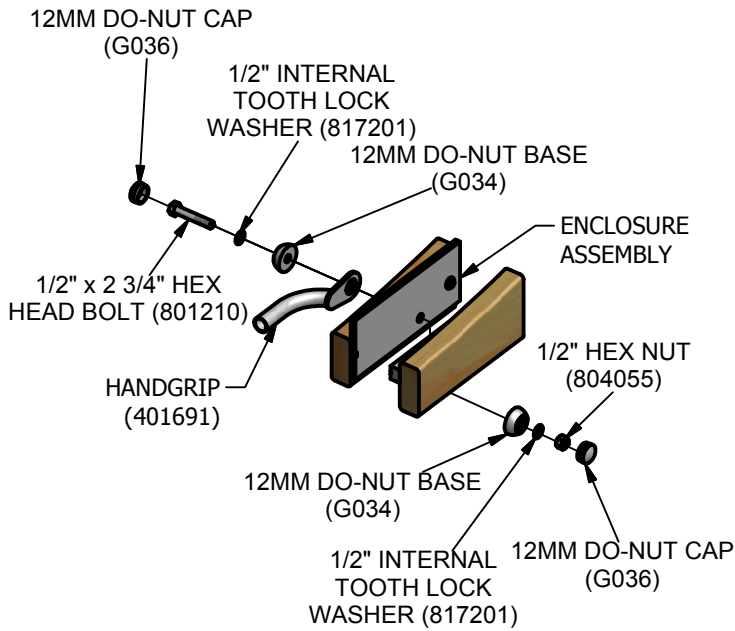


EC-012 TODDLER PULL-UP MIRROR MEC-012 TODDLER PULL-UP MIRROR





EC-012 TODDLER PULL-UP MIRROR MEC-012 TODDLER PULL-UP MIRROR



234