

## EC-124 Elevated Sand Table

### PARTS LIST

REF. NO.	DESCRIPTION	NO. REQ'D	PART NUMBER
1	Sand Table	1	134313
2	Sand Table Leg	3	404183
	Hardware Complete	1	134315
3	1/2" x 3" Hex Head Bolt	3	801211*
4	1/2" Lockwasher	3	817342*
5	1/2" T-Nut	3	804553*
6	Plug	1	104346*

**Unless Otherwise Specified, All Units of Measure are Each  
\*Included in Hardware**

**Warning: Small parts and hardware items may present a potential choking hazard. Promptly remove all unused parts from play area. Any bolt end protruding more than two full threads beyond the face of the nut causes risk of clothing entanglement. Promptly cut-off flush, file smooth, and treat to prevent corrosion.**

**Note: Peen Tee-Nuts and Flatwashers to match radius of pipe after assembly is complete.  
Note: Loctite (supplied by others) should be used on all threaded hardware.**

### SPECIFICATIONS

**TABLE:** Shall be made of hot rolled 14 gauge steel. The table shall have a 1" diameter drain plug provided (in bottom of spinning) for drainage.

**LEG:** Shall be fabricated of 2-3/8" O.D. galvanized pipe.

**FINISH:** Table and Legs shall have a powder coat finish.

**HARDWARE:** All nuts, bolts, screws, inserts, and lockwashers used in the assembly of all play equipment, shall be stainless steel, yellow dichromate plated steel, blue-coat plated steel, mechanically galvanized or powder coated/yellow dichromate plated steel. All

primary fasteners shall be 300 series stainless steel. Fasteners with yellow dichromate treatment have an electro deposited, 99.9% pure zinc substrate applied from a specially formulated solution sealed with a yellow dichromate top coat designed to work in conjunction with the zinc plating. Yellow dichromate has a 320% longer life to white corrosion and 275% longer to red corrosion than does hot-dip galvanizing.

**SPECIFICATIONS:** BIGTOYS® has a policy of continuous improvement and reserves the right to discontinue or change specifications without notice.

### INSTALLATION INSTRUCTIONS

**NOTE: THIS INSTALLATION BOOKLET SHOULD BE KEPT IN CUSTOMER'S FILE FOR FUTURE REFERENCE.**

**NOTE:** Do not overtighten bolts. To overtighten may cause buckling or dimpling of some parts.

**NOTE:** Read installation instructions thoroughly before starting assembly. Pour concrete only after final assembly is complete. Bracing material may be required during assembly.

**NOTE:** Do not tighten any nuts, bolts, rods, etc. until the unit is completely assembled.

**NOTE:** Assembly and leveling time will be greatly reduced if a transit is used to set location and depth of ground holes.

**NOTE:** It is important to check the hole location in the upright and on the drawings while assembling this unit.

**NOTE:** Place a brick or equivalent at the bottom of ground holes (where shown) to provide a solid foundation. Allow for this in hole depth. See Footing Detail.

**STEP 1:** Dig required holes according to the Ground Plan. See Ground Plan and Footing Detail for dimensions and notes regarding surfacing, etc. **NOTE: Due to extremes in weather and soil conditions, hole sizes may have to be increased to meet local conditions.**

**STEP 2:** Attach legs to sand table as shown on Assembly Drawing.

## EC-124 Elevated Sand Table

### **INSTALLATION INSTRUCTIONS**

**STEP 3:** Insert plastic plug into hole provided in bottom of sand dish. *NOTE: This plug can be removed for water drainage. Replace plug in sand table after drainage operation.* It may be helpful to lay a large piece of geotextile (filter fabric supplied by others) in the bottom of the sand box to allow water drainage.

**STEP 4:** Place assembly into ground holes, plumb and level. Tighten all nuts, bolts, etc. and pour all ground holes with concrete to within 1'-0" [30.48cm] of finished surface where shown. See Footing Detail.

**NOTE:** Allow 48 hours minimum for concrete to cure and harden before using Sand Table.

**NOTE:** Loctite (supplied by others) should be used on all threaded hardware.

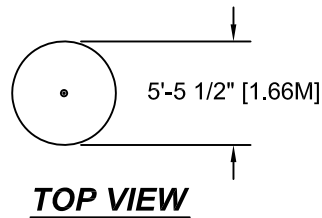
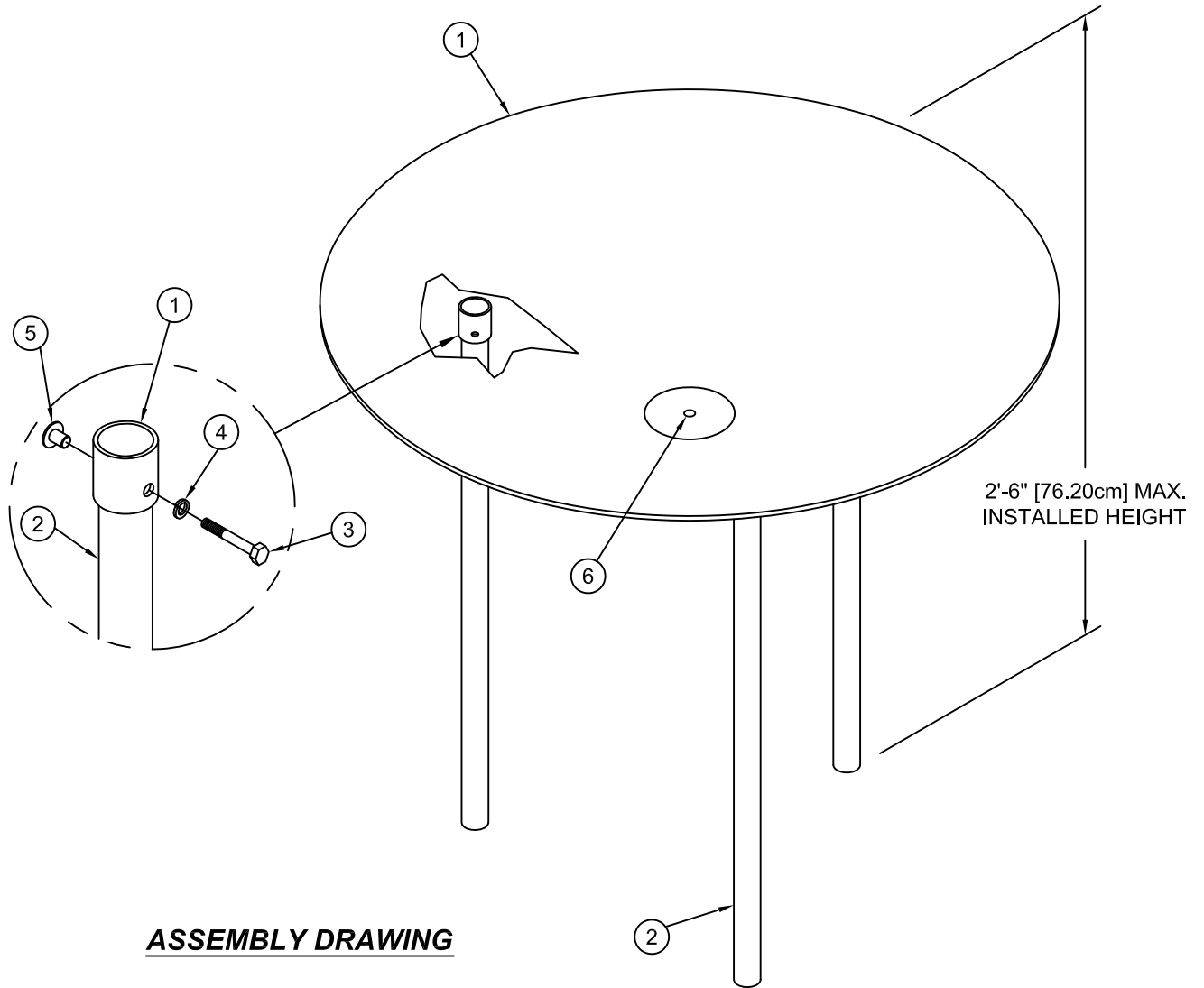


### **IMPORTANT PRODUCT INFORMATION AND SAFETY WARNINGS**



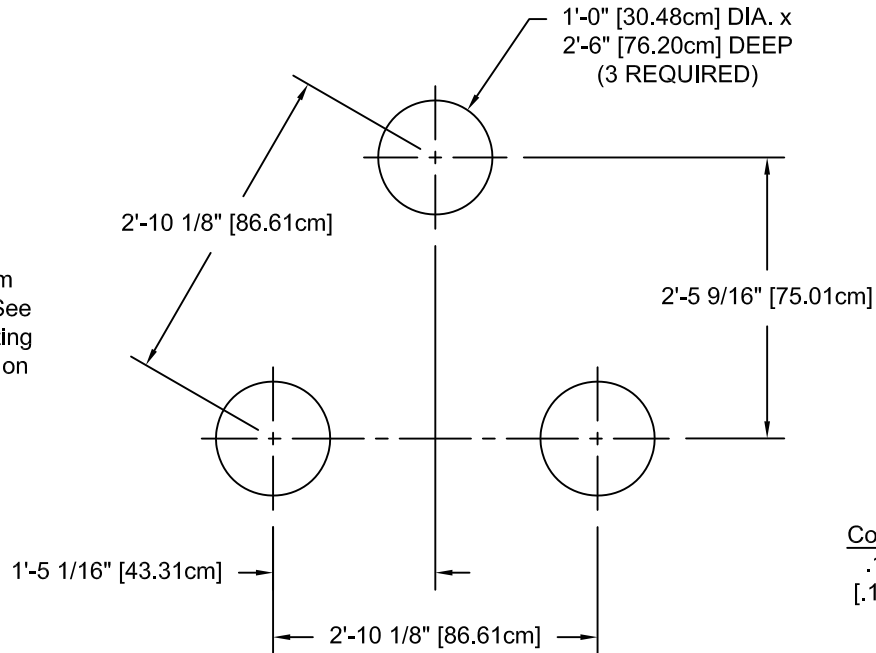
- All equipment should be installed on a soft, resilient, energy-absorbing ground surface. NEVER INSTALL PLAY EQUIPMENT ON CONCRETE OR ASPHALT. A fall on a hard surface can result in serious injury to the equipment user.
- ALWAYS FOLLOW INSTALLATION INSTRUCTIONS WHEN ERECTING EQUIPMENT.
- Worn surfaces around equipment should be restored. Concrete footings should never be exposed. Surface depth should comply with installation instructions.
- Equipment should be placed to eliminate conflicting traffic patterns.
- All protruding nuts and bolts should be covered; sharp edges on pipes should be capped or removed. Check for bent, broken or severely worn pipe and replace.
- Test overall stability and rigidity of all play equipment. Check for proper assembly, installation and ground anchoring.
- Check for and repair damage caused by wear or vandalism, a major factor in injury-causing situations.
- BIGTOYS® PROVIDES ITS CUSTOMERS WITH COMPLETE SPECIFICATION SHEETS AND INSTALLATION INSTRUCTIONS. THE SPECIFICATION SHEET CONTAINS THE LISTING OF EVERY PART USED IN A PIECE OF EQUIPMENT AND SHOULD BE KEPT IN THE CUSTOMER'S FILES FOR ACCURATE REFERENCE WHEN REPLACEMENT PARTS ARE NEEDED.
- Never add components not intended for use with this product.
- Regular maintenance is necessary on this and all park and recreational equipment to ensure the safety of the user.
- Proper maintenance of BIGTOYS® equipment requires regular tightening of all bolts, nuts, and set screws.
- All equipment should be free of rust and repainted whenever necessary to deter rusting.
- Regular checking of all parts, castings, etc., should be made. If a part is broken or worn it should be replaced immediately.
- A soft, resilient surface should be placed under all climbers, extending at least six feet in all directions surrounding the climbers. NEVER INSTALL PLAY EQUIPMENT ON CONCRETE OR ASPHALT.

## EC-124 Elevated Sand Table



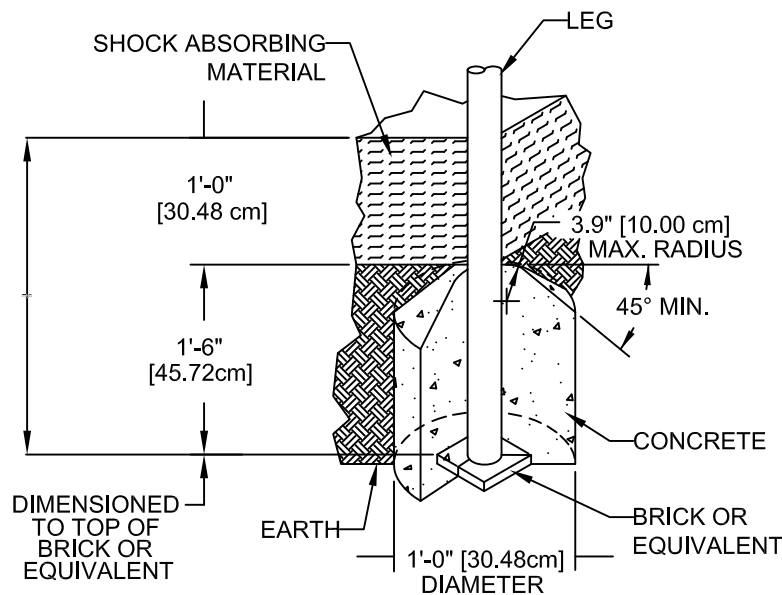
## EC-124 Elevated Sand Table

**NOTE:** Hole depths indicated on all ground plans are measured from the finished surface. See Footing Detail. All footing dimensions are based on level finished surface.



**Concrete Required:**  
 .13 Cubic Yards  
 [.10 Cubic Meters]

### GROUND PLAN



SHOCK ABSORBING PROPERTIES OF SURFACING MATERIALS VARY. IF YOU DETERMINE THAT LESS THAN 1'-0" [30.48cm] OF SURFACING IS REQUIRED, OR IF INSTALLED HEIGHT OF DISH IS TO BE LESS THAN 2'-6" [76.20cm] MAXIMUM, MAKE UP THE DIFFERENCE IN ELEVATION WITH EARTH, BEFORE APPLYING SURFACING.

**NOTE:**  
 1.) SLOPED FOOTING IS A REQUIREMENT OF EUROPEAN STANDARD EN1176-1.  
 2.) SUGGESTED MINIMUM CONCRETE RATING: 3000PSI.

### FOOTING DETAIL