

EC-011 CRAWL THROUGH TUNNEL MEC-011 CRAWL THROUGH TUNNEL

Parts List				
ITEM	DESCRIPTION	EC-011	MEC-011	PART NUMBER
1	WAVE PANEL	2	2	401099
2	COLUMN, 5'	4	0	Z005
2	COLUMN, 5'	0	4	404766
3	2' STRAIGHT BIGTUBE	1	1	401107
	END CAP	4	4	G010
	COLUMN END FITTING - METAL	0	4	M600
	HARDWARE COMPLETE	1	0	404768
	HARDWARE COMPLETE	0	1	404769
	EAGLE FASTENER	8	0	G000*
	HOLE PLUG	40	0	G005G*
	COLUMN END FITTING - WOOD	4	0	Z600*
	#10 x 2" WOOD SCREW	12	0	815507*
	#10 x 1/2" SHEET METAL SCREW	0	12	810062*
	2 1/2" FLAT WASHER 2" O.D.	8	8	817413*
	1/2" x 4" HEX HEAD BOLT	8	0	800809*
	1/2" X 3" HEX HEAD BOLT	0	8	800806*
	3/8" x 1 1/4" HEX HEAD BOLT	24	24	801004*
	12MM DO-NUT BASE	8	8	G034*
	12MM DO-NUT CAP	8	8	G036*
	10MM DO-NUT BASE	24	24	G030*
	10MM DO-NUT CAP	24	24	G032*
	1/4" x 15/32" DRIVE RIVET	0	8	805303*
	10" PIPE	4	4	401991*
	LABEL PKG, 6-23 MONTHS	1	1	H4001*
	CSA PANEL LANYARD	4	4	402960*

Unless Otherwise Specified, All Units of Measure are Each

Items listed below Hardware Complete line are included with Hardware Complete Number

Warning: During Installation, Hardware And Small Parts Are Choking Hazards For Young Children. Store Unused Parts Appropriately Until Assembly Is Completed. Once Assembly Is Completed, Remove Any Unused Parts From The Play Environment And Dispose/Save Them In A Secure Location. Any bolt end protruding more than two full threads beyond the face of the nut causes risk of clothing entanglement.

Promptly cut-off flush, file smooth, and treat to prevent corrosion.

Note: Peen Tee-Nuts and Flatwashers to match radius of pipe after assembly is complete.

Note: Loctite (supplied by others) should be used on any non-patch hardware.

INSTALLATION INSTRUCTIONS:

1. Dig Footing Hole as shown in Elevation view.
2. Insert Columns into holes using brick or equivalent as support as shown in Elevation View.
3. (For EC-011 only) Locate holes in upright that will receive Wave Panel, drive Eagle Fasteners into these holes. Fille open column holes above the surfacing line with hole plugs. Refer to Detail A.
4. Attach Panels to uprights using 1/2" Flatwasher, Donut Base, 1/2" Hex Bolt, and Donut Cap. Refer to Detail B.

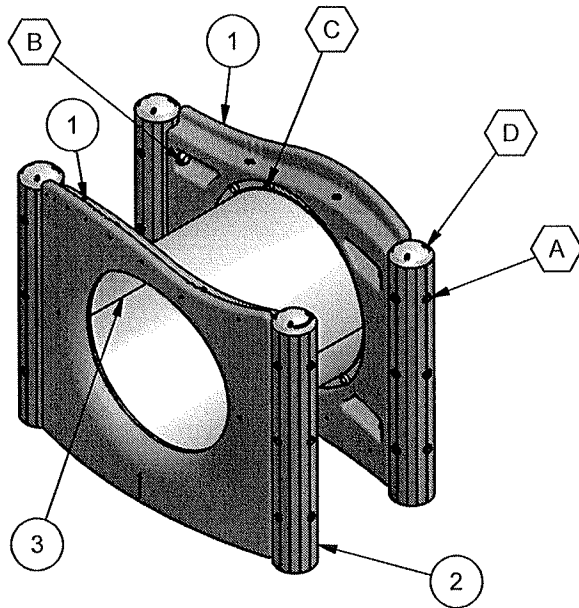
EC-011 CRAWL THROUGH TUNNEL

MEC-011 CRAWL THROUGH TUNNEL

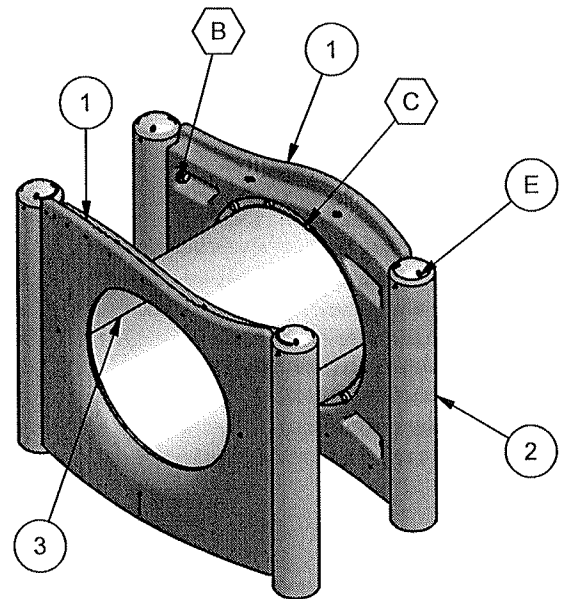
5. Attach Bigtube to Panels using Donut Base, 3/8" Hex Bolt, and Donut Cap as shown in Detail C.
6. Attach End fitting and End Cap to the top of columns as shown in detail D or E.
7. Plumb and level the entire assembly and tighten all fasteners and pour concrete as shown in Elevation View.
8. When the structure is finished and satisfactory, eliminate sharp points and sharp edges (burring) on installed hardware like bolts, nuts, etc. Install resilient surfacing material within the use zone of play structure in accordance with ASTM \ specifications F1292 appropriate for the fall height of each structure. Refer to the Safety Guidelines.

MAINTENANCE PROCEDURE:

Periodically check hardware for tightness, and tighten as necessary. Always check all parts for breakage or wear, and immediately put equipment out of service until any faulty parts found are repaired or replaced. Also Check all metal parts for rust, paint loss and touch-up if necessary with paint. Check for welded areas and verify integrity. Check periodically resilient surfacing for appropriate depth and remove extraneous materials that could cause injury, infection, or disease. Maintain detailed installation, inspection, maintenance, and repair records for each public-use playground equipment.



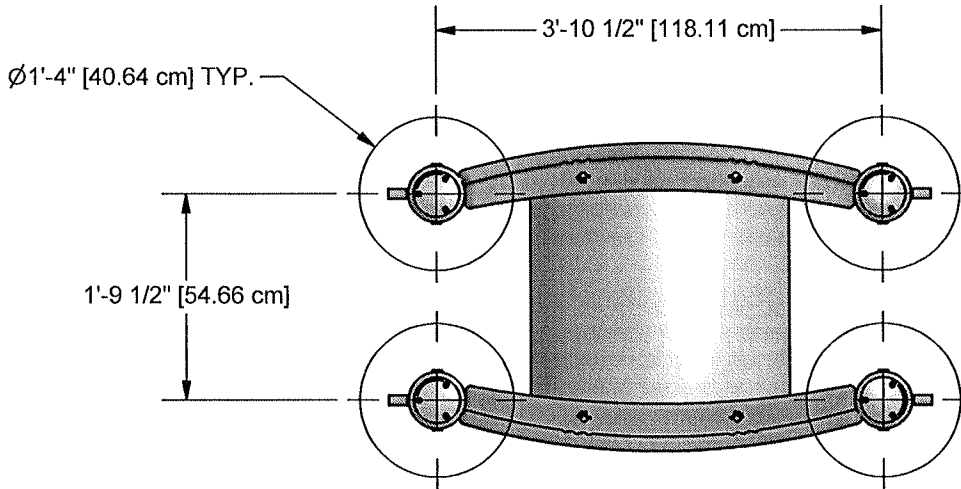
EC-011



MEC-011

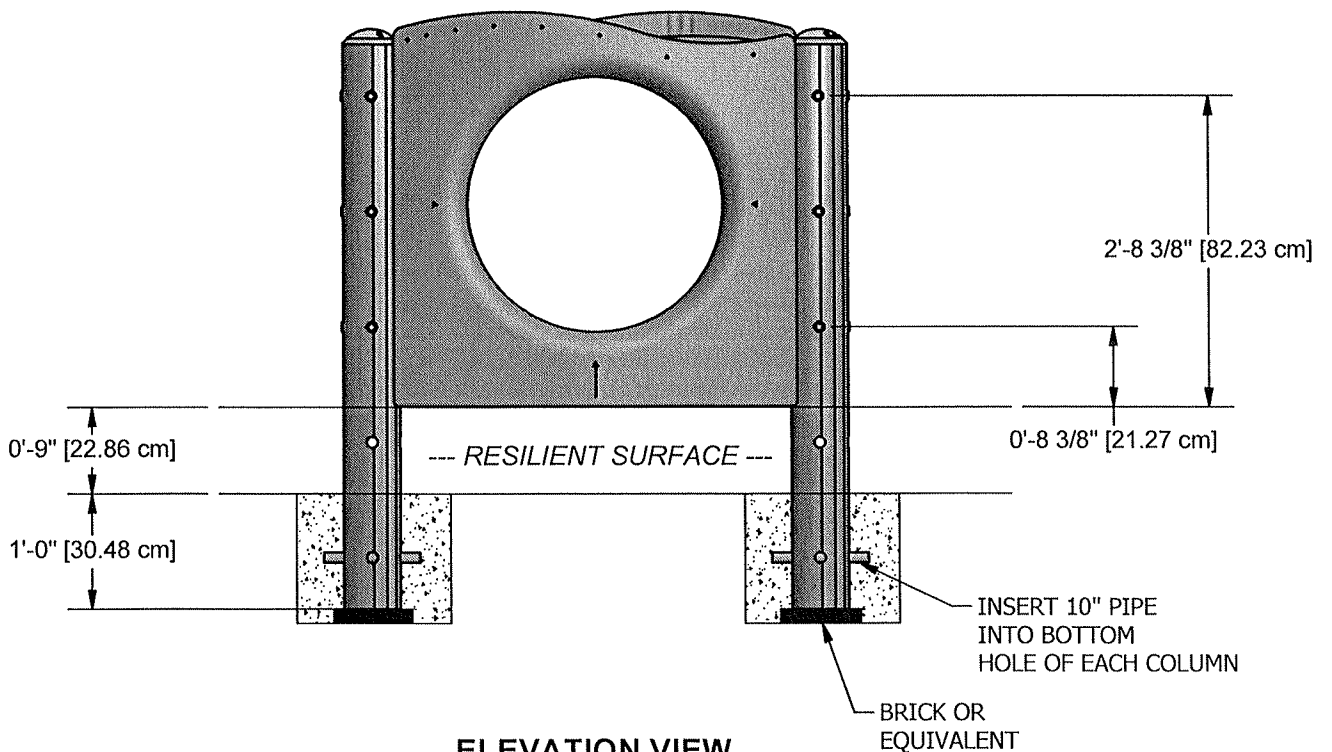
ASSEMBLY VIEW

EC-011 CRAWL THROUGH TUNNEL
MEC-011 CRAWL THROUGH TUNNEL

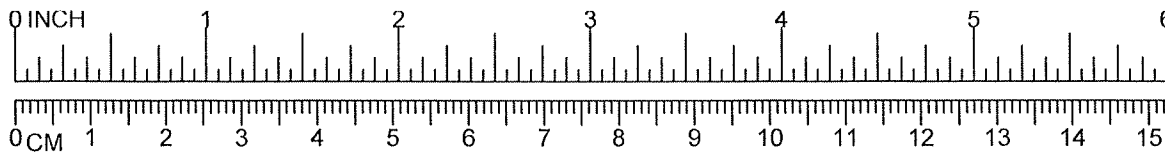


PLAN VIEW
EC-011 SHOWN

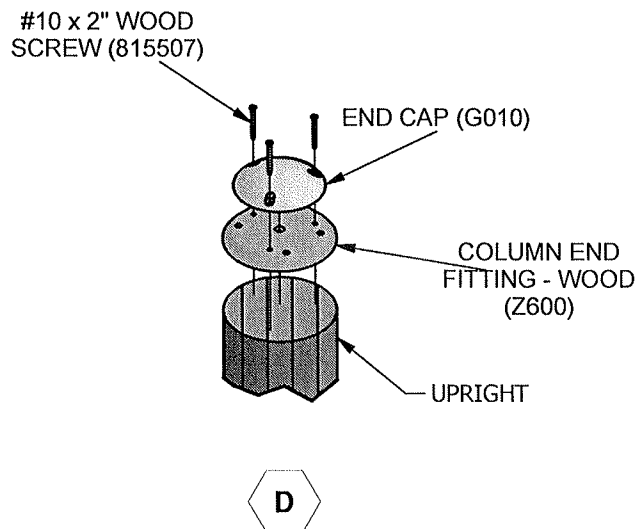
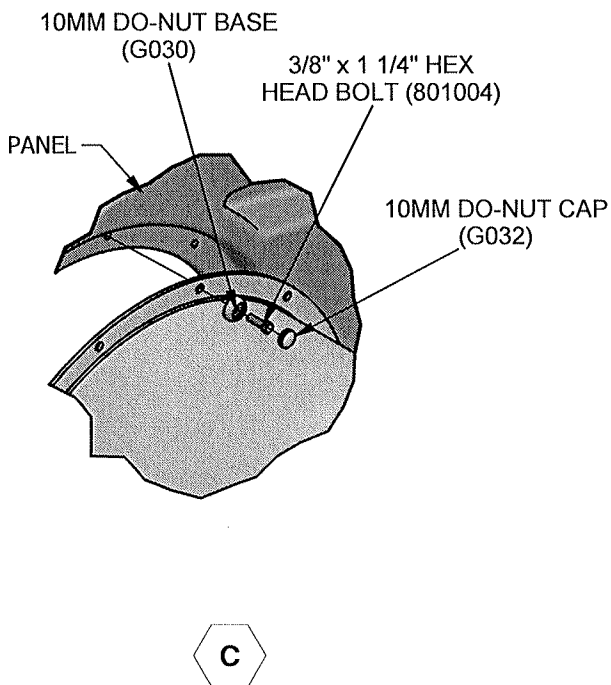
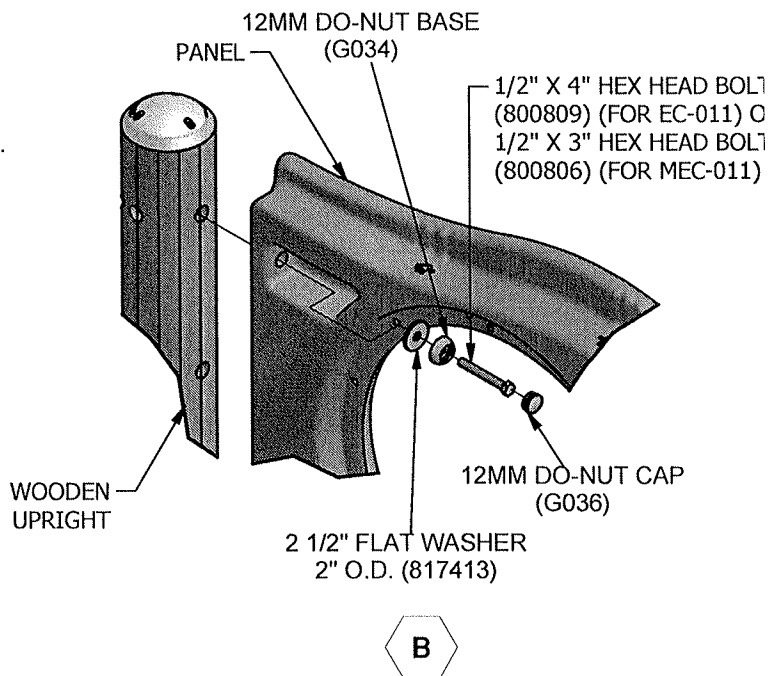
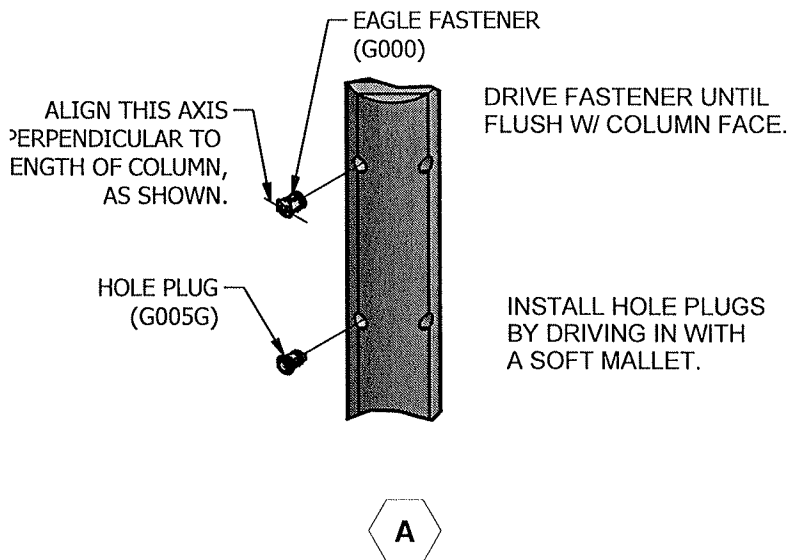
CONCRETE REQUIRED
.20 CUBIC YARDS
.16 [CUBIC METERS]

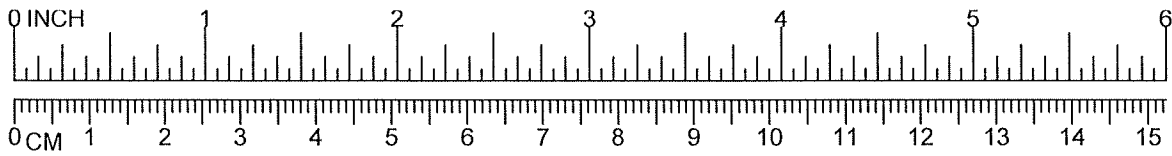


ELEVATION VIEW
EC-011 SHOWN



EC-011 CRAWL THROUGH TUNNEL MEC-011 CRAWL THROUGH TUNNEL





EC-011 CRAWL THROUGH TUNNEL MEC-011 CRAWL THROUGH TUNNEL

